



# CLEAN & GREEN 2025

*Working together for a brighter future*



YOUR ONE STOP FOR SERVICE

Receiving service from the city of Glendale is now as easy as 1-2-3!



1. Simply go to [www.GlendaleOne.com](http://www.GlendaleOne.com) or download the GlendaleOne mobile app from the App Store or Google Play.
2. Give us the location where service is needed, select the type of service needed, and opt-in for automatic updates or create an account (optional).
3. Submit your request and receive a confirmation number that includes the expected turnaround time for the issue.

GlendaleOne is easy to use, increases accessibility to city services, and improves service delivery and communication city-wide.

**Key features include:** Automatic escalation to a supervisor if there is a delay, knowledge base of frequently asked questions, automatic location identification and map integration and the ability to include photos or other documents with your service request.

*Outstanding service is our priority, and GlendaleOne demonstrates our commitment to deliver excellence and innovation as we strive to make Glendale the community of choice for residents, businesses and employees.*

# HOUSEHOLD HAZARDOUS WASTE DISPOSAL

## Common household hazardous items include:

*Automotive fluids • Car batteries • Oil filters • Flammables • All household batteries • Mercury • Oil-based paint  
Pesticides • Pool chemicals • Propane tanks • Paint, oil, gasoline, antifreeze & other automotive liquids (20-gallon limit)*

## Spring & Fall Pick-ups

Many household products contain hazardous ingredients that can be harmful when used or discarded incorrectly. Glendale solid waste workers will come to you and make sure these items are properly disposed of.

## Options for Household Hazardous Waste Disposal Year-Round

Many items received during household hazardous waste collection service are recyclable at local stores. Compact fluorescent bulbs (CFLs), lead-acid batteries (non-automotive), NiCad and rechargeable batteries are all recycled as part of nationwide programs. Contact the store where the items were purchased or call the service desk of a local store to find out where you can drop off these items.

## Freon Notice

For appliances with Freon units such as refrigerators, freezers, water coolers and window-mounted air conditioners, a \$20 fee will be added to your water bill (fee added for each Freon unit). This service requires a special pickup request which can be scheduled by calling 623-930-2660.



## Pick-up Process & Schedules:

Twice a year, residents may schedule appointments to have hazardous waste picked up. The process is as simple as 1, 2, 3!

1. During the appointment dates listed below, schedule a pickup and have a list ready of the items you have for disposal.
2. Place the items out for collection on the scheduled pickup day by 6 a.m.
3. The material is removed on your scheduled day and disposed of safely.

Mark your calendar for the dates listed below to be sure to clear your house of unwanted toxic and hazardous materials.

Call 623-930-2660 to make your appointment.  
[www.glendaleaz.com/householdhazardouswaste](http://www.glendaleaz.com/householdhazardouswaste)

## 2025 Household Hazardous Waste Schedule

### Spring

**Appointments: February 24 – March 14**  
**Collections: March 10 – March 28**

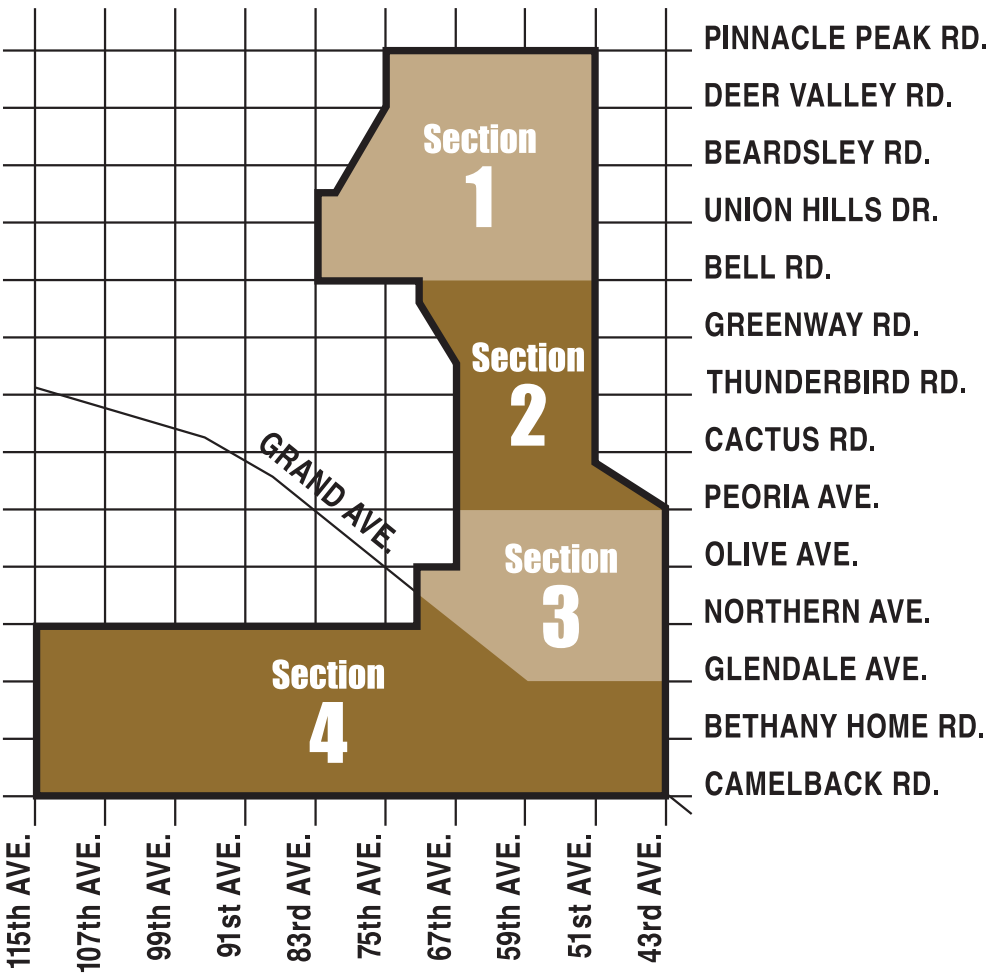
### Fall

**Appointments: September 15 – October 10**  
**Collections: October 6 – October 24**

# 2025 BULK TRASH PICKUP SCHEDULE

## Bulk Trash is Picking Up!

*As a Glendale resident, you receive once-a-month bulk trash pickup service. Please follow the established bulk trash placement schedule as this will assist in keeping the operational costs down and the collection service timely. Street sweeping will take place 7 to 10 days after bulk trash collection.*



### SECTION 1

January	6-10
February	3-7
March	3-7
April	7-11
May	5-9
June	2-6
July	7-11
August	4-8
September	1-5
October	6-10
November	3-7
December	1-5

### SECTION 2

January	13-17
February	10-14
March	10-14
April	14-18
May	12-16
June	9-13
July	14-18
August	11-15
September	8-12
October	13-17
November	10-14
December	8-12

### SECTION 3

January	20-24
February	17-21
March	17-21
April	21-25
May	19-23
June	16-20
July	21-25
August	18-22
September	15-19
October	20-24
November	17-21
December	15-19

### SECTION 4

January	27-31
February	24-28
March	24-28
April	28 - May 2
May	26-30
June	23-27
July	28 - August 1
August	25-29
September	22-26
October	27-31
November	24-28
December	22-26

# Recycle Right!

Reciclar Bien!



## Acceptable Items

Articulos Aceptables



Plastic Bottles & Containers  
*Bottellas y Recipientes De Plastico*



Paper • Papel



Glass Bottles & Containers  
*Bottellas y Recipientes De Plastico*



Flattened Cardboard & Paperboard  
*Carton y Cartulina Aplanados*



Food & Beverage Cans  
*Lata De Comida y Bebida*



Pizza Boxes  
*with minimal residue*  
*Cajas De Pizza*  
*Con Residuos Minimios*



## Recyclables Need to be Clean, Dry and Empty.

After finishing with a recyclable item, rinse as necessary to remove any food. There is no need to remove caps or labels, but do remove non-recyclable items like plastic cereal box inserts. Cardboard needs to be empty of all packing materials and broken down.

All recyclables must be relatively clean, empty and dry. This does not mean putting them through a dishwasher. This is especially important during our current drought period. An example of relatively clean, empty and dry would be a mayonnaise jar that has been wiped clean of residue with a spatula or emptying a soda bottle in the sink. Both of those are clean and dry enough.

There are many polymers of plastic. The plastic industry uses a numbering system that you can find on the bottom of most plastic bottles and containers. Glendale recycles and accepts those with the symbol 1 and 2. Plastic that contains Styrofoam (cups, egg cartons, packing materials and containers) are not recycled in Glendale's recycling program. All of these do not have ready markets and are not economical to sort and recycle.

### ITEMS NOT ACCEPTED

- Carpeting and clothing
- Diapers
- Dog and cat food bags
- Drywall
- Fast food items - straws, cups and wrappers
- Furnace filters
- Hangers - no metal or plastic (of any kind)
- Household garbage (such as paper plates, bathroom items, dog waste, paper towels and napkins)
- Landscaping (leaves, grass, tree limbs, dirt and rocks)
- Non-container plastic (examples are plastic spoons, forks or knives, PVC pipe, bubble wrap and motor oil containers)
- Plastic bags (except for shredded paper placed in a clear plastic bag)
- Scrap metal
- Shoes
- Styrofoam
- Tile
- Toys



Scan for updated  
recycling information



## KNOW YOUR NO'S

CONOZCA SUS NOES



When in doubt, throw it out!  
*En caso de duda tirarlo!*



NO Plastic bags, Wrap, Film  
*Bolsas de Plastic, Envoltura, Pelicula*



NO Food, Yard Waste, Diapers,  
Pet Food Bags  
*Comida, Desechos de Jardin, Pañales,  
Bolsas de Comida Para Mascotas*



NO Styrofoam or Wax Items  
*Espuma de Poliestireno o Articulos de Cera*



NO Fabrics, Shoes, Toys, Bowling Balls  
*Telas, Zapatos, Juguetes, Bolas de Boliche*



NO Bagged, Boxed "Nesting"  
Recyclables  
*Reciclables "Nesting" en Bolsas o Cajas*



NO PVC, Tupperware, Plastic Hangers  
*Colruro de Polivinilo, Tupperware, Ganchos*



NO Tangles: Hoses, Wires, Ropes,  
Cords, Wire Hangers, String Lights  
*Enredadores - Mangueras, Alambres,  
Cuerdas, Cordones, Ganchos de  
Alambre, Luces de Cuerda*



NO Scrap metal: Pots/Pans, Car Parts  
*Chatarra, Ollas y Sartenes,  
Piezas de Automovil*



NO Batteries/Baterias



NO Computers, Printers, Cell  
Phones, Electric Appliances  
*Computadoras, Impresoras, Telefono  
Movil, Aparatos Electricos*

### NO HAZARDOUS WASTE!

Automotive Fluids & Products, Paint, Chemicals, Flammables  
*Fluidos y productos automotrices, Pintar, Productos Quimicos, Inflamalbes*

## Los artículos reciclables deben estar limpios, secos y vacíos.

Después de terminar con un artículo reciclable, enjuáguelo como sea necesario para eliminar cualquier alimento restante. No tiene que remover las tapas o las etiquetas, pero sí debe remover los artículos que no sean reciclables tales como los insertos de plástico en las cajas de cereal. El cartón debe recortarse y estar vacío de todos los materiales de empaque.

Todos los materiales reciclables deben estar relativamente limpios, vacíos y secos. Esto no significa que debe lavarlos en la lavavajillas. Esto es especialmente importante durante nuestro período actual de sequía. Un ejemplo de artículos relativamente limpios, vacíos y secos sería un frasco de mayonesa al que se le han quitado los residuos con una espátula, o una botella de refresco que se haya vaciado completamente en el fregadero. Ambos artículos están limpios y lo suficientemente secos.

Hay muchos polímeros de plástico. La industria del plástico usa un sistema de numeración que se puede encontrar en la parte inferior de la mayoría de las botellas y de los recipientes de plástico. Glendale recicla y acepta aquellos con los símbolos 1 y 2. Los artículos de plástico que contienen espuma de poliestireno, tales como vasos, cajas de huevos, materiales de empaque y contenedores no se reciclan en el Programa de Reciclaje de Glendale. Todos éstos no cuentan con mercados listos y no es económico separarlos y reciclarlos.

### ARTÍCULOS QUE NO SON ACEPTADOS

- Alfombras y ropa
- Pañales
- Bolsas de comida para perros y gatos
- Tablarroca
- Artículos de comida rápida – popotes, vasos y envoltorios
- Filtros de la calefacción
- Ganchos – que no sean de metal o de plástico
- Basura doméstica (como platos de papel, artículos de baño, desechos de perros, toallas de papel y servilletas)
- Desechos de jardinería (hojas, pasto, ramas de árboles, tierra y rocas)
- Plástico que no sea de contenedores (por ejemplo, cucharas, tenedores o cuchillos de plástico, tubos de PVC, envoltura de burbujas y contenedores de aceite de motor)
- Bolsas de plástico (excepto para el papel triturado que se coloque en una bolsa de plástico transparente)
- Metal chatarra
- Zapatos
- Espuma de poliestireno
- Azulejo
- Juguetes

# RESIDENTIAL REBATES



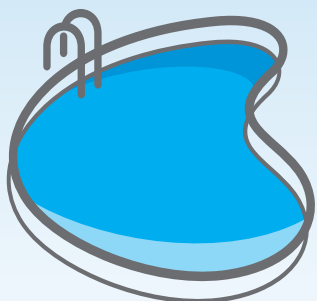
IRRIGATION  
TECHNOLOGY

UP TO  
\$750

**Glendale**  
WATER SERVICES

POOL/SPA  
REMOVAL

UP TO  
\$800



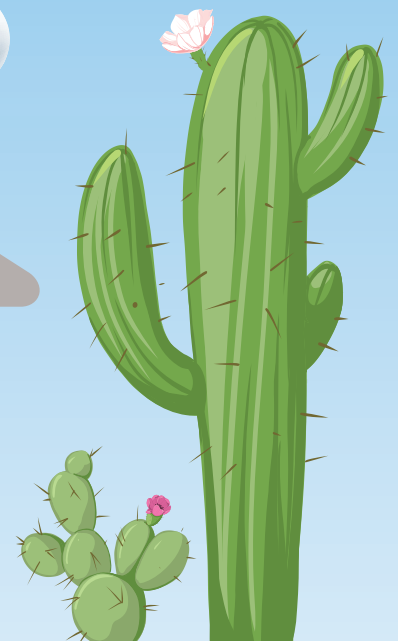
ENERGY STAR  
CLOTHES  
WASHER

UP TO  
\$200



WATERSENSE  
TOILET

UP TO  
\$100



UP TO **\$3000**  
for xeriscape (\$1.00/SF)

UP TO **\$250**  
for artificial grass (\$0.25/SF)

LANDSCAPE

**GLENDALAZ.COM/REBATES (623) 930-3596**



## *Is the Garbage Container Lid Always Open on Service Day?*

Each single-family residence is assigned one garbage container and one recycling container. Typically, half of most household waste is recyclable, and the need for extra garbage capacity can be minimized or eliminated by recycling. The Maricopa County Department of Public Health requires lids to be closed at all times to control insect and rodent infestation.

Overfilled containers also create a service issue as debris can spill onto the ground and could prevent receiving service. Additional refuse containers can be requested by the resident for an additional fee.



## *If it Fits in the Bin, Toss it in!*

The Bulk Trash Collection Program is for residents who pay for solid waste service. Help control service costs by utilizing your garbage container bin because collection equipment is outfitted to collect bulky items. It takes staff longer to collect smaller items so ***If it Fits in the Bin, Toss it in!***



For those occasions when you can't wait until your next scheduled collection day, you can take your items to the landfill for disposal. With your city utility water bill and driver's license to show you are a Glendale resident, you get up to a ton free once a month. ([www.glendaleaz.com/landfill](http://www.glendaleaz.com/landfill)). You can also call for a bulk trash special pickup for a fee of **\$99** for the first 30 minutes of collection.

Appliances with Freon units such as refrigerators, freezers, water coolers and window-mounted air-conditioners can be collected for a **\$20** fee per unit that will be added to your water bill. This service requires a special pick-up request and is scheduled only during your bulk trash service week. Call 623-930-2660 to schedule a pickup.

For home remodels or cleanup projects, the city of Glendale has all your roll-off container needs competitively priced for your residential projects. Various rates are charged depending on the size of the bin and the number of services per month. To order any of the additional services offered by the city of Glendale Solid Waste Department, please call 623-930-2660.





## Monthly Bulk Trash Service

**Glendale provides bulk trash pickup for large items that WILL NOT fit in your residential garbage container. Unwanted furniture, appliances, tree limbs and brush from your property can be disposed of at this time.**

**When:** Place bulk trash out no earlier than 6 a.m. on the Thursday before your scheduled service week and no later than 6 a.m. on the Monday of your scheduled service week. It is a violation of city ordinance to put bulk trash out before or after the assigned period. Residents who fail to follow guidelines will not receive bulk trash collection service until the following month and are required to remove their items from public view until the next scheduled service.

**Do’s:**

- Place all bulk trash within 4 feet of the sidewalk edge toward your home.
- Stack items as neatly as possible, parallel to the street adjacent to your property line.
- No object placed out for collection shall exceed 4 feet in length, except bulk trash (for example, a couch).
- Keep glass separate from other items, in sturdy cardboard boxes. Boxes should be 2ft. x 2ft. x 2ft. or smaller, taped shut and clearly labeled “glass.”
- Due to Freon, for refrigerator disposal there will be a \$20 fee added to your water bill per disposed refrigerator. Call 623-930-2660 to schedule a special pickup.

**Don’ts:**

- Do not put out any of the following items: containers you want to keep, soil, rock, gravel, concrete, shingles, bricks, blocks, drywall, tile, fiberglass, wet or dry mortar, sod, tree trunks, paint, oil, car batteries, pool chemicals or any other hazardous materials.
- Tires must be taken to the Glendale Municipal Landfill.
- Do not place bulk trash within 2 feet of city-owned containers, water meters, cable boxes, fire hydrants, block walls or other fixed objects.
- Do not pile bulk trash more than 6 feet high.
- Do not park vehicles within 10 feet of bulk trash piles.
- Do not put out styrofoam, including packing materials and foam peanuts.
- Do not put bulk trash in alleyways

**Bulk trash service will not be provided if a possible health or safety risk or chance of equipment or property damage exists.**

## MLK Day of Service Saturday, January 18

Throughout his life, Dr. Martin Luther King Jr. advocated for peace, unity and service. He was committed to creating change in his community and so are many Glendale volunteers. MLK Day of Service is an annual tribute to the life of Dr. King and a way to donate vitamin-rich citrus to families in need. In partnership with HandsOn Greater Phoenix and St. Mary’s Food Bank Alliance, we are looking for 200 volunteers to help glean fruit. To increase our impact, our MLK Day of Service will be a site for the community to drop off their homegrown citrus donations for St. Mary’s Food Bank Alliance. For more information or to register, visit: [www.glendaleaz.com/CommunityVolunteerProgram](http://www.glendaleaz.com/CommunityVolunteerProgram)

# JANUARY *Clean & Green* 2025

SUNDAY	MONDAY	TUESDAY	WEDNESDAY	THURSDAY	FRIDAY	SATURDAY
29	30	31	1 New Year's Day City Offices Closed No Solid Waste Collection	2	3	4
5	6 Bulk Trash Section 1	7	8	9	10	11
12	13 Bulk Trash Section 2	14	15	16	17	18
19	20 Dr. Martin Luther King Jr. Day City Offices Closed Bulk Trash Section 3	21	22	23	24	25
26	27 Bulk Trash Section 4	28	29	30	31	1

THANKSGIVING

Christmas

New Year's Day

RESIDENTIAL SOLID WASTE COLLECTIONS HOLIDAYS

Solid Waste collection schedules are only affected on these three holidays. For more information, please consult this calendar or visit [www.glendaleaz.com/trash\\_holidayschedule](http://www.glendaleaz.com/trash_holidayschedule)



## Recycle Right Wizard

### Right Stuff in the Right Bin

Contamination is a challenge all recycling programs battle daily. The digital tool, “Recycle Right Wizard,” allows residents to search a long list of items that will provide information on proper disposal (refuse or recycle bin). The Recycle Right Wizard is aimed at reducing contamination, reducing call volumes and diverting recyclable materials from the landfill. Test your recycling knowledge by going to [www.glendaleaz.com/recycling](http://www.glendaleaz.com/recycling).

## Household Hazardous Waste Appointments!

### Call between February 24 & March 14

Collections run from March 10-28. Check your shed and garage for unwanted hazardous items. Place items in a box marked “HHW” with everything clearly labeled in the original container. Schedule appointments at 623-930-2660. For more information, visit [www.glendaleaz.com/householdhazardouswaste](http://www.glendaleaz.com/householdhazardouswaste).

## Play the Sorting Game!

Complete the game and print your own Certificate of Achievement! Go to [www.glendaleaz.com/recycling](http://www.glendaleaz.com/recycling) and play today!



# FEBRUARY

## Clean & Green 2025

SUNDAY	MONDAY	TUESDAY	WEDNESDAY	THURSDAY	FRIDAY	SATURDAY
26	27	28	29	30	31	1
2	3Bulk Trash Section 1	4	5	6	7	8
9	10Bulk Trash Section 2	11	12	13	14	1519th Annual Glendale Serve Day
16	17Presidents' Day City Offices ClosedBulk Trash Section 3	18	19	20	21	22
23	24Bulk Trash Section 4	25	26	27	28	1
2	3	4	5	6	7	8

## Glendale Municipal Landfill

The city of Glendale Municipal Landfill is located at 11480 W. Glendale Avenue, on the north side of the road. The landfill is a responsible, progressive and an environmentally sound long-term solution to solid waste management, essential to the future health, welfare and prosperity of residents.

Solid Waste inspectors stay busy inspecting 90-gallon recycling containers placed out for service to decrease contamination in the recycling stream. Reducing contamination in the recycling stream keeps processing fees as low as possible. If contamination is found, an inspector will leave educational materials. If the contamination is severe, a “no service” tag will be left explaining why service was not provided. An inspector also performs refuse container inspections looking for unbagged garbage and hazardous items such as paint, automotive oil and corrosive chemicals.

### Hours of Operation:

Monday – Friday: 7:30 a.m. - 4 p.m.

Saturday: 7 a.m. - 3 p.m.

Closed: Sundays & official city holidays

[www.glendaleaz.com/landfill](http://www.glendaleaz.com/landfill)



[www.glendaleone.com](http://www.glendaleone.com)



## Glendale’s Drought Response

The Southwestern United States has been in a drought for 25 years resulting in a shortage on the Colorado River. To protect the Colorado River’s major water reservoirs from reaching critically low levels, the federal government has declared a Tier 1 shortage for 2025. This means that Glendale will remain in Stage One – Drought Watch of the City’s Drought Management Plan (DMP). Under this plan, Glendale municipal properties and operations will continue to meet its 5% water reduction goal and Glendale water customers are encouraged to voluntarily reduce their water use: [www.glendaleaz.com/drought](http://www.glendaleaz.com/drought).

## Help Out with the Drought

Glendale offers a variety of free programs and services to help customers save water:

- Receive a rebate for removing unwanted grass or an in-ground pool/spa.
- Receive a rebate for upgrading to a WaterSense toilet or irrigation controller.
- Receive a rebate for upgrading to an ENERGY STAR clothes washer.
- Order a free, home water conservation kit.
- Report irrigation water waste at [www.glendaleone.com](http://www.glendaleone.com).

For more information, call 623-930-3596 or visit [www.glendaleaz.com/waterconservation](http://www.glendaleaz.com/waterconservation).



# MARCH *Clean & Green* 2025

SUNDAY	MONDAY	TUESDAY	WEDNESDAY	THURSDAY	FRIDAY	SATURDAY
						Folk & Heritage Festival
23	24	25	26	27	28	1
Folk & Heritage Festival						
2	3 Bulk Trash Section 1	4	5	6	7	8
9	10 Bulk Trash Section 2	11	12	13	14	15
	EPA WaterSense Fix-A-Leak Week   <a href="http://www.epa.gov/watersense/fix-leak-week">www.epa.gov/watersense/fix-leak-week</a>					
16	17 Bulk Trash Section 3	18	19	20	21	22
23	24 Bulk Trash Section 4	25	26	27	28	29
30	31 No Bulk Trash Service	1	2	3	4	5

### RESIDENTIAL WATER CONSERVATION REBATES

UP TO \$200

ENERGY STAR CLOTHES WASHER

UP TO \$100

WATERSENSE TOILET

IRRIGATION TECH

UP TO \$750

POOL/SPA REMOVAL

UP TO \$800

LANDSCAPE/XERISCAPE

UP TO \$3000 for xeriscape (\$1.00/SF)

UP TO \$250 for artificial grass

For full program requirements and eligibility visit [www.glendaleaz.com/rebates](http://www.glendaleaz.com/rebates) or call 623.930.3596



APRIL

Clean & Green  
2025

SUNDAY	MONDAY	TUESDAY	WEDNESDAY	THURSDAY	FRIDAY	SATURDAY
30	31	1	2	3	4	5
6	7Bulk Trash Section 1	8	9	10	11	12
13	14Bulk Trash Section 2	15	16	17	18	19
20	21Bulk Trash Section 3	22Earth Day	23	24	25Arbor Day	26
27	28Bulk Trash Section 4	29	30	1	2	3
4	5	6	7	8	9	10

## Valley Bike Month

The city of Glendale invites you to take advantage of the benefits of biking during Valley Bike Month this April. Whether it’s a ride to work, a lunch break from your home office, or a weekend ride around the neighborhood with family or friends, get on your bike and go for a spin!

Bicycling is beneficial to both the environment and your health. It’s a great form of exercise, good for your physical and mental health, and a convenient mode of transportation that doesn’t pollute the environment or add to traffic congestion. It’s a win for everyone!

Valley Bike Month offers a variety of ways to participate, including the Bike Month Pledge, Team Challenges, and Share the Ride Contests. To learn more about Valley Bike Month events, go to <https://sharetheride.com>.

The city of Glendale also has its own bike event in April, the Glendale Family Bike Ride, which attracts cyclists from all over the valley. Each year, the event kicks off at Sahuaro Ranch Park and is open to riders of all ages and skill levels. Registration will open in February at [www.glendaleaz.com/familybikeride](http://www.glendaleaz.com/familybikeride).

## Traffic Signal Optimization Program

The city of Glendale’s Transportation Department was awarded grant funding for three Traffic Signal Optimization Program (TSOP) projects. The award was part of MAG’s (Maricopa Association of Governments) Intelligent Transportation Systems Program.

The project resulted in the implementation of the best possible timing plans along three of the City’s major East-West corridors.

- The three corridors were as follows:**
- a. Camelback Road from Loop 101 to 51st Ave
  - b. Glendale Avenue from Loop 101 to 45th Ave
  - c. Bethany Home Road from Loop 101 to 47th Ave

Traffic signal optimization is one of the most cost-effective ways to improve traffic movement and make our streets safe and efficient. By coordinating all the signals along the corridors, the idle or stop time at signalized intersections was minimized thus reducing emissions from vehicles. This is one of the ways that Glendale is leveraging technology to make our skies cleaner.

## Long-Range Transportation Plan

The city of Glendale is currently working to update the Long-Range Transportation Plan. This plan is an essential element in the planning process that includes a vision, goals, and objectives for future transportation improvements citywide. This plan examines the City’s current conditions as well as engages the community to identify the needs of all users and all modes of transportation. Providing facilities to accommodate alternative modes of transportation allows the reduction of fuel usage, reduction of vehicle emissions, and improves public health. This plan will guide the City to develop a sustainable, equitable, and environmentally conscious transportation system.



## Understanding Your Monthly Sewer Charges

You may notice a change in the monthly sewer fee in your water bill each May. Every year the city of Glendale recalculates each customer’s sewer usage based on their water use billed January through March. If you are aware of high water use between January and March, you may be eligible for a fee adjustment and must submit a Sewer Appeal form. Access the form at [www.glendaleaz.com](http://www.glendaleaz.com) and type “Sewer Appeal” in the Search Function. Appeals are accepted up to 90 days after the May billing.

**Examples of typical sewer appeals:**

- Leaks (January through March bills)
- Filling a new pool or draining and refilling an existing pool (January through March bills)
- Outdoor watering during the winter months, typically associated with larger than normal landscaping

New residents or customers who do not have a full 3 months’ winter water usage, will be assigned usage based on the average of all customers with a similar type of property. For more information, call 623-930-3190.

## Report Landscape Water Waste

Water is a precious resource and it’s important to use it wisely. If you observe landscape-related water waste, take a photo and report it at [www.glendaleone.com](http://www.glendaleone.com) or call 623-930-3535.



# MAY

## Clean & Green 2025

SUNDAY	MONDAY	TUESDAY	WEDNESDAY	THURSDAY	FRIDAY	SATURDAY
27	28	29	30	1	2	3
Drinking Water Week   <a href="http://www.awwa.org">www.awwa.org</a>						
4	5 Bulk Trash Section 1	6	7	8	9	10
11	12 Bulk Trash Section 2	13	14	15	16	17
18	19 Bulk Trash Section 3	20	21	22	23	24
	Memorial Day City Offices Closed					
25	26 Bulk Trash Section 4	27	28	29	30	31
1	2	3	4	5	6	7

## Apply for an Irrigation Technology Rebate

Glendale residential water customers can receive up to \$750 for upgrading to water-efficient technology. Review the rebate terms and conditions and apply at [www.glendaleaz.com/rebates](http://www.glendaleaz.com/rebates).

**Pro Tip:** Do a walk-about in your landscape at least once a month to check for irrigation leaks.

### RESIDENTIAL REBATES

IRRIGATION TECH

UP TO \$750

[GLENDALEAZ.COM/REBATES](http://GLENDALEAZ.COM/REBATES)



JUNE

Clean & Green  
2025

SUNDAY	MONDAY	TUESDAY	WEDNESDAY	THURSDAY	FRIDAY	SATURDAY
1	2Bulk Trash Section 1	3	4	5	6	7
8	9Bulk Trash Section 2	10	11	12	13	14
15	16Bulk Trash Section 3	17	18	19	20	21
22	23Bulk Trash Section 4	24	25	26	27	28
29	30No Bulk Trash Service	1	2	3	4	5
6	7	8	9	10	11	12

## National Flood Insurance Program

FEMA Floodplain Insurance, officially known as the National Flood Insurance Program (NFIP), is a federal program managed by FEMA. It provides flood insurance to property owners, renters, and businesses in participating communities. FEMA Flood Insurance policies cover buildings, their contents, or both. This helps protect against financial losses due to flood damage, which likely is not covered by standard homeowner insurance. To purchase floodplain insurance, you can contact your insurance company or agent. If your insurance agent cannot provide flood insurance, you can contact the FEMA Mapping and Insurance eXchange (FMIX) center at 1-877-336-2627 or by emailing [FEMA-FMIX@fema.dhs.gov](mailto:FEMA-FMIX@fema.dhs.gov) to request an insurance agent referral. For more information, visit [www.floodsmart.gov](http://www.floodsmart.gov).

## Home Drainage Solution

Too much water near your home’s foundation can create mold, pests, and structural damage. Redirect rainwater away from your home and into the landscape. Rainwater harvesting can be as simple as grading the landscape and creating basins and berms that allow rainwater to slow, spread, and sink into the landscape. A more complex system can include a gutter, downspout, cistern, pump, and distribution system. As with any landscape project, research first and develop a landscape plan and budget.

## When To Water

If you receive at least ½” of rain, skip an irrigation cycle by using the OFF, STOP, or RAIN setting on your controller – without disturbing your programs. Sign up for free monthly outdoor watering reminders by texting **WHENTOWATER** to 1-844-416-1428.

## Monsoon Season Begins June 15

Polluted stormwater runoff is the nation’s greatest threat to clean water. When it rains, stormwater flows over driveways, sidewalks, streets, and parking lots, picking up dangerous pollutants. These pollutants end up in our rivers, washes, retention areas, and parks where they can have adverse effects on the environment and people.

### What YOU can do to protect our local waterways:

- Sweep debris off driveways, sidewalks, and patios and dispose of it in the trash can.
- Pick up pet waste and dispose of it in the trash can.
- Minimize the use of pesticides, herbicides, and fertilizers and avoid the use of these chemicals before it rains.
- Per City Code: keep irrigation water on your landscape, and only drain or backwash your pool water into the sanitary sewer. Never in the street!
- Never pour chemicals down the storm drain! Schedule a household hazardous waste disposal pick-up with the Glendale Solid Waste Division at 623-930-2660.

For more information, visit [www.glendaleaz.com/environmentalprotection](http://www.glendaleaz.com/environmentalprotection).

**If you experience extra debris caused by monsoon storms, contact customer service at 623-930-2660.**



## National Parks & Recreation Month

Parks and Recreation Month has been celebrated nationally since July 1985 to promote building strong, vibrant and resilient communities. Parks and recreation professionals make a positive impact on the lives of community members every day through recreation and education programming and maintaining safe neighborhood parks and facilities for the well-being of children and adults.

We welcome you to experience the outstanding parks, recreation programs, facilities, and services that Glendale offers. For more information, visit [www.glendaleaz.com/parksandrec](http://www.glendaleaz.com/parksandrec).

## Glendale Water Quality

The Water Services Department tests, analyzes and monitors water quality several times a day to ensure that the water provided is clean and safe. Want to see the latest Water Quality Report? Visit [www.glendaleazwater.com](http://www.glendaleazwater.com).

## July is Smart Irrigation Month

- Check your irrigation system for leaks or inefficiencies
- Use the Landscape Watering by the Numbers guide to learn how to properly water your landscape ([wateruseitwisely.com/saving-water-outdoors](http://wateruseitwisely.com/saving-water-outdoors))
- Eligible water customers can receive up to \$750 for upgrading to select water-efficient irrigation technology. Learn more at [www.glendaleaz.com/rebates](http://www.glendaleaz.com/rebates).

# JULY

## Clean & Green 2025

SUNDAY	MONDAY	TUESDAY	WEDNESDAY	THURSDAY	FRIDAY	SATURDAY
29	30	1	2	3	Independence Day City Offices Closed	5
6	7 Bulk Trash Section 1	8	9	10	11	12
13	14 Bulk Trash Section 2	15	16	17	18	19
20	21 Bulk Trash Section 3	22	23	24	25	26
27	28 Bulk Trash Section 4	29	30	31	1	2
3	4	5	6	7	8	9

## You Can Help Reduce Air Pollution

Ground level ozone forms in the summer months when vehicle emissions and activities using gasoline, paints, solvents, and other chemicals react with the sunlight and heat. Help reduce ozone pollution by fueling your vehicle after dark, teleworking, avoiding idling in drive-thrus, and scheduling home improvement projects in the cooler months. For more tips and information, visit [Maricopa.gov/AQCleanAir](http://Maricopa.gov/AQCleanAir).

### RESIDENTIAL REBATES

#### LANDSCAPE

UP TO **\$3000**  
for xeriscape (\$1.00/SF)

UP TO **\$250**  
for artificial grass (\$0.25/SF)



[GLENDALEAZ.COM/REBATES](http://GLENDALEAZ.COM/REBATES)



## Right-of-Way Landscape Restoration Plan

The Transportation Right-of-Way Division has made significant progress on the Landscape Restoration Plan, which was approved by City Council in January 2023. This seven-year plan focuses on creating a sustainable landscape infrastructure that balances water conservation and aesthetics. Key initiatives include using drought-tolerant plants, decorative rock, water-harvesting features, and smart irrigation systems, with a goal of reducing water use by 30%. As of June 30, 2024, 11 miles of landscape restoration have been completed, with another 10 miles planned by the end of FY2025.

Public engagement has played a key role, with positive feedback from meetings held in all Council Districts throughout 2023. Residents expressed support for the focus on sustainable practices and water conservation. Moving forward, the Division will continue implementing smart irrigation and water-saving measures such as the use of drought-tolerant plant material, which are not only expected to reduce water consumption but also heat island effects and improve air quality. These efforts will ensure that the City’s street right-of-way areas remain both environmentally friendly and visually appealing.

## Active Transportation Plan Projects Update

Active Transportation describes person-powered ways of getting around our streets, such as walking, bicycling, rolling a wheelchair, or a mobility device. The City completed its Active Transportation Plan (ATP) in 2019 focusing on a complete active transportation network that encourages physical activity, and environmental sustainability, emphasizes regional connectivity, and provides residents with transportation choices.

Since then, various Active Transportation projects have been completed and additional projects are underway which help pave the way for a strong active transportation network.

- **67th Avenue Bike Lanes** – Installation of bike lanes on a 5-mile section of 67th Avenue between Missouri Avenue and Cholla Street. The bicycle lanes were recently constructed within the existing roadway cross-section by narrowing travel and turn lanes and medians. The project improves mobility and safety in this area.
- **Central Core Sidewalk Infill near downtown** – The project improves sidewalk connectivity and pedestrian mobility by constructing missing sidewalk segments. The project will also upgrade curb ramps to Americans with Disability Act standards.
- **Maryland Active Transportation Improvements** – This project is to infill missing sidewalks and improve bicycle facilities in the area between Maryland Avenue and Bethany Home Road. The objective of the project is to improve mobility and access to businesses, bus stops, and residences.
- **Missouri Active Transportation Improvements** – The project is to infill missing sidewalks and improve bicycle facilities in the area immediately west of Grand Avenue, between Missouri Avenue and Bethany Home Road. The project will construct approximately 2.2 total linear miles of missing sidewalks, 1.5 miles of new bicycle lanes, and 0.5 miles of shared bicycle facilities.

# AUGUST

## Clean & Green 2025

SUNDAY	MONDAY	TUESDAY	WEDNESDAY	THURSDAY	FRIDAY	SATURDAY
27	28	29	30	31	1	2
3	4Bulk Trash Section 1	5	6	7	8	9
10	11Bulk Trash Section 2	12	13	14	15	16
17	18Bulk Trash Section 3	19	20	21	22	23
24	25Bulk Trash Section 4	26	27	28	29	30
31	1	2	3	4	5	6



### WHAT CAN YOU DO WITH A GLENDALE LIBRARY CARD?

- 24/7 online access to books, movies & music
- Free concerts, craft programs storytimes, and more!
- Free Internet and Wifi Access
- Remote printing
- Meeting and study rooms
- Free access to local museums
- Seasonal seeds to "check out" and plant
- And so much more!!!

SEPTEMBER IS LIBRARY CARD SIGN UP MONTH!

### Seasonal Seed Library

Visit any Glendale Public Library to “checkout” free seeds from the Seed Library. Seeds are sourced from Native Seeds/SEARCH and provided by the Glendale Water Services Department – Conservation & Sustainable Living Division. For more information, visit [www.glendaleazlibrary.com](http://www.glendaleazlibrary.com).

# SEPTEMBER

## Clean & Green 2025

SUNDAY	MONDAY	TUESDAY	WEDNESDAY	THURSDAY	FRIDAY	SATURDAY
	Labor Day City Offices Closed					
31	1 Bulk Trash Section 1	2	3	4	5	6
7	8 Bulk Trash Section 2	9	10	11	12	13
14	15 Bulk Trash Section 3	16	17	18	19	20
21	22 Bulk Trash Section 4	23	24	25	26	27
28	29 No Bulk Trash Service	30	1	2	3	4
5	6	7	8	9	10	11

### Household Hazardous Waste Appointments!

Call between September 15 & October 10

Collections run from October 6-24. Check your shed and garage for unwanted hazardous items. Place items in a box marked “HHW” with everything clearly labeled in the original container. Schedule appointments at 623-930-2660. For more information, visit [www.glendaleaz.com/householdhazardouswaste](http://www.glendaleaz.com/householdhazardouswaste)

### RESIDENTIAL REBATES

#### POOL/SPA REMOVAL

UP TO \$800

[GLENDALEAZ.COM/REBATES](http://GLENDALEAZ.COM/REBATES)



## Be a Neat Neighbor

The Glendale Code Compliance Division enforces city codes that maintain established community standards that preserve and promote the health, safety, and living environment of our community and neighborhoods. Please be a neat neighbor by removing vehicles in disrepair, eliminating storage in front of the house, and keeping grass and weeds cut to 6 inches or less in height as required by Glendale City Code. For more information, visit [www.glendaleaz.com/codecompliance](http://www.glendaleaz.com/codecompliance) or call 623-930-3610.

## Clothes Washer Rebate

Glendale residential water customers can receive up to \$200 for upgrading to an ENERGY STAR clothes washer. Review the rebate terms and conditions and apply at [www.glendaleaz.com/rebates](http://www.glendaleaz.com/rebates).

**Pro Tip:** Run full loads whenever possible since clothes washers typically use about the same amount of energy regardless of the load size.

### RESIDENTIAL REBATES

ENERGY STAR CLOTHES WASHER

UP TO \$200



GLENDALEAZ.COM/REBATES

# OCTOBER

## Clean & Green 2025

SUNDAY	MONDAY	TUESDAY	WEDNESDAY	THURSDAY	FRIDAY	SATURDAY
28	29	30	1	2	3	4
5	6Bulk Trash Section 1	7	8	9	10	11
12	13Bulk Trash Section 2	14	15	16	17	18
National Teen Driver Safety Week						
19	20Bulk Trash Section 3	21	22	23	24	25
26	27Bulk Trash Section 4	28	29	30	31Halloween	1
2	3	4	5	6	7	8

## National Teen Driver Safety Week

October 19-25, 2025, is National Teen Driver Safety Week. Motor vehicle crashes are the leading cause of death for teens and young adults (15-24 years old) in the United States. Distracted driving is one of the fastest-growing safety issues on the roads today. To address this concern, the city of Glendale has partnered with the National Safety Council and Glendale high schools to teach young drivers how to take control of driving situations by taking personal responsibility for their own actions, attitudes and behaviors using the Alive at 25 defensive driving training program.

## Transit Services

Transit provides a wide range of convenient, low-cost transportation alternatives for Glendale citizens and visitors, including fixed-route bus service, Dial-A-Ride, Glendale Urban Shuttle (GUS) bus service, ADA service, a taxi voucher program and the new Microtransit, On-Demand Service, similar to Uber/Lyft. For information about these services call 623-930-2940. For valley-wide fixed route bus schedules and information on transit education programs visit [www.glendaleaz.com/publictransportation](http://www.glendaleaz.com/publictransportation).



## Glendale Collects Cell Phones for America Recycles Day

Time to clean out the drawers for those old cell phones! In celebration of America Recycles Day on November 15, Glendale has developed a special cell phone recycling program throughout November. The cell phones will go to the Glendale Family Advocacy Center to be refurbished and will become available for victims of stalking and domestic violence. Statistics show that cell phones are replaced after only 18 months of use. It is important to keep cell phones out of landfills. For drop-off locations, visit [www.glendaleaz.com](http://www.glendaleaz.com) or call 623-930-2660.



**NO ELECTRONICS  
IN RECYCLE BINS**



**NO Computers, Printers, Cell Phones,  
Electric Appliances**

*When non-recyclable items enter the recycle stream it's called contamination, which increases rates. Help us kick it to the curb, visit [www.glendaleaz.com/recycling](http://www.glendaleaz.com/recycling).*

# NOVEMBER

## Clean & Green 2025

SUNDAY	MONDAY	TUESDAY	WEDNESDAY	THURSDAY	FRIDAY	SATURDAY
26	27	28	29	30	31	1
2	3 <small>Bulk Trash Section 1</small>	4	5	6	7	8
9	10 <small>Bulk Trash Section 2</small>	11 <small>Veterans Day City Offices Closed</small>	12	13	14	15
16	17 <small>Bulk Trash Section 3</small>	18	19	20	21	22
23/30	24 <small>Bulk Trash Section 4</small>	25	26	27 <small>Thanksgiving Day City Offices Closed  No Solid Waste Collection</small>	28 <small>Thanksgiving Holiday City Offices Closed</small>	29

## Cease the Grease

Avoid pouring fats, oils, and grease (FOG) down the kitchen drain, sinks, or toilets to prevent pipe blockages, sewage backup, and environmental damage. Keep grease out of your drains and follow best practices to avoid sewer blockages.

- Allow used cooking oil to cool and solidify before disposing of it in the trash
- Scrape food residue from dishes into the trash before washing
- Use paper towels to remove excess grease from cookware

## Think Before You Flush

**Protect Glendale's sewer system and the environment. Do NOT flush:**

- Paper towels and napkins
- Cotton balls and cotton swabs
- Floss
- Feminine hygiene products
- All disposable and flushable wipes
- Diapers
- Medications
- Syringes and needles
- Kitty litter
- Trash



For more information, visit [www.glendaleaz.com/environmentalprotection](http://www.glendaleaz.com/environmentalprotection)



**THANKSGIVING**



**Christmas**



**New Year's Day**

**RESIDENTIAL  
SOLID WASTE  
COLLECTIONS  
HOLIDAYS**

Solid Waste collection schedules are only affected on these three holidays. For more information, please consult this calendar or visit [www.glendaleaz.com/trash\\_holidayschedule](http://www.glendaleaz.com/trash_holidayschedule)



## Save Water and Lower Your Sewer Fee

Did you know that your water use billed in January, February, and March is used to calculate your annual sewer fee? Starting in December, reduce your water use during these winter months to lower your sewer charge.

### Follow these easy tips to lower your monthly water bill:

- Fix leaky toilets, faucets, and showerheads.
- Fix irrigation and pool leaks.
- Adjust your irrigation schedule monthly.
- Upgrade to WaterSense showerheads, faucets, toilets, and irrigation technology.
- Learn about Glendale’s water efficiency rebates at [www.glendaleaz.com/rebates](http://www.glendaleaz.com/rebates).
- Find easy ways to save water at [wateruseitwisely.com](http://wateruseitwisely.com).

If you have a leak or fill your pool during the sewer average period, you can appeal your sewer charge. For more information, visit [www.glendaleaz.com/watersewertrashbilling](http://www.glendaleaz.com/watersewertrashbilling).

## From the Heart

From the Heart (FTH) is a unique partnership of Glendale residents, the city of Glendale, and local community agencies. FTH puts your donation to work every day. Whether serving meals to the elderly, giving emergency help to homeless families, or supporting abused children, FTH gives to non-profit agencies that provide services to our community. Since FTH began in 1997, more than \$2.5 million has been raised and distributed to non-profit agencies serving Glendale residents. Donate today! For more information, visit <https://bit.ly/GlendaleAZFTH>.

# DECEMBER

## Clean & Green 2025

SUNDAY	MONDAY	TUESDAY	WEDNESDAY	THURSDAY	FRIDAY	SATURDAY
30	1Bulk Trash Section 1	2	3	4	5	6
7	8Bulk Trash Section 2	9	10	11	12	13
14	15Bulk Trash Section 3	16	17	18	19	20
21	22Bulk Trash Section 4	23	24	25Christmas City Offices Closed No Solid Waste Collection	26	27
28	29No Bulk Trash Service	30	31	1Happy New Year! City Offices Closed No Solid Waste Collection	2	3

## Burn Cleaner, Burn Better

Keep our air clean and breathe easier, don’t burn wood on a No Burn Day! Convert your wood burning fireplace to natural gas or electric, or switch to other cleaner-burning alternatives. You can still enjoy the glow of a warm fire while reducing harmful smoke pollution! For the latest air quality forecast and No Burn Day status, download the free Clean Air Mobile App through the App Store or Google Play, visit [Maricopa.gov/AQCleanAir](http://Maricopa.gov/AQCleanAir) each day, or call 602-506-6400.

## ‘Tis the Season to Treecycle

Beginning December 26 through January 4

The Solid Waste Department has established several sites throughout the city where residents can drop off trees for recycling (single, unbagged tree, remove all decorations, tree stands, metal stakes and nails).

For Treecycle locations, call 623-930-2660 or visit [www.glendaleaz.com/sanitation/bulktrash.cfm](http://www.glendaleaz.com/sanitation/bulktrash.cfm)



THANKSGIVING

Christmas

New Year's Day

RESIDENTIAL SOLID WASTE COLLECTIONS HOLIDAYS

Solid Waste collection schedules are only affected on these three holidays. For more information, please consult this calendar or visit [www.glendaleaz.com/trash\\_holidayschedule](http://www.glendaleaz.com/trash_holidayschedule)