

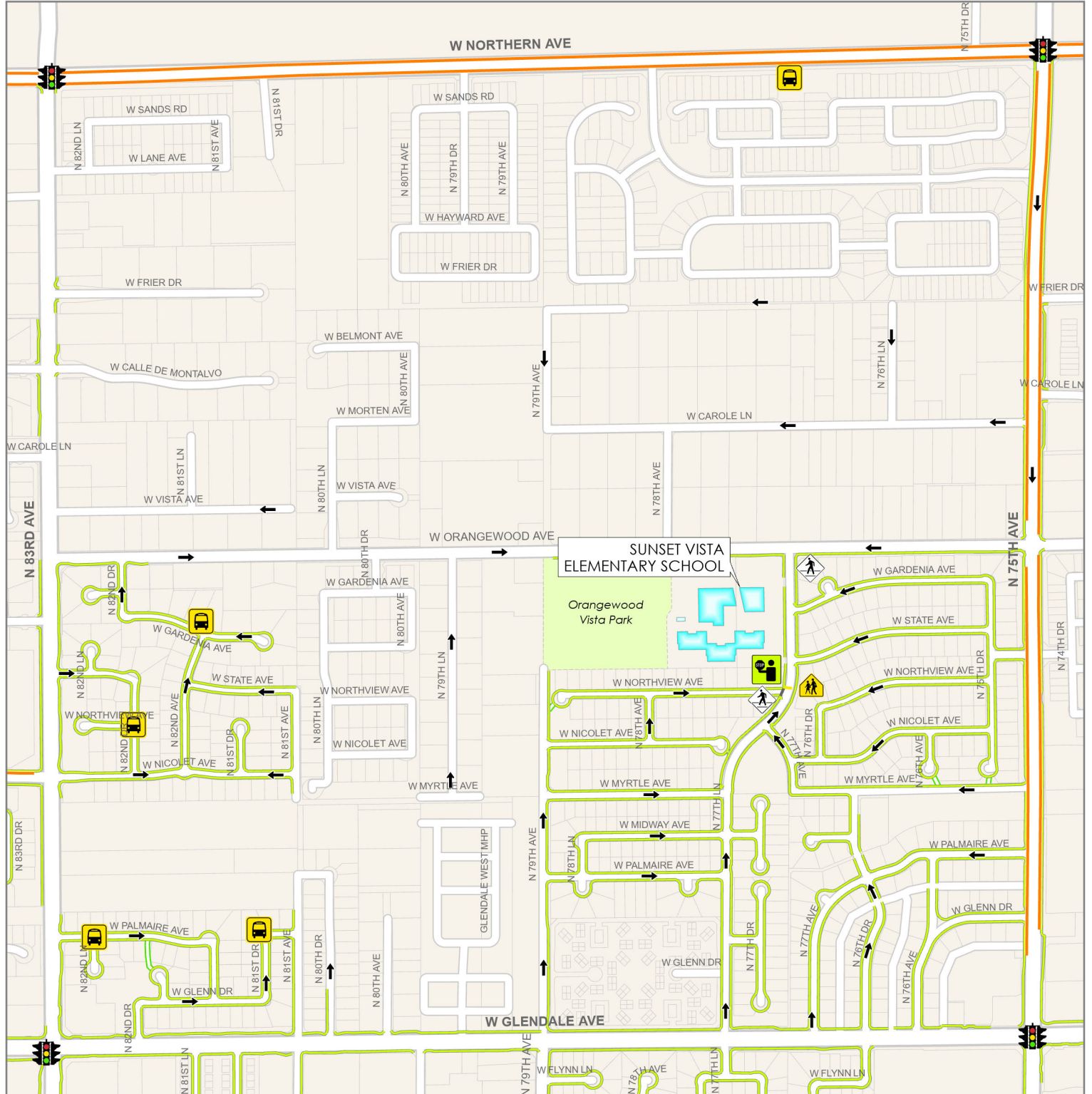
SUNSET VISTA Elementary School

GLENDALE ELEMENTARY SCHOOL DISTRICT

Safe Routes to School

Suggested Route Walking/Biking Map

2024-25 School Year



NOTE: This map is based on imprecise source data, subject to change and is FOR GENERAL REFERENCE ONLY.

Y2K Engineering | 2024



Crossing Guard



Pedestrian Crossing



School Crossing: 15 MPH
w/Crossing Guard



Traffic Circle



Traffic Signal



Safe Route to School
Unpaved Access



School Bus Stop



Fire Station

Pedestrian Crosswalk

School Crosswalk

Bicycle Facility

Sidewalk

Shared Use Path

School Bldg



250 125 0 250 500
Feet



Glendale Elementary School District | Safe Routes to School Map
Copyright © 2024 City of Glendale, AZ

The City of Glendale makes no claims concerning the accuracy of this map nor assumes any liability resulting from the use of the information here on.

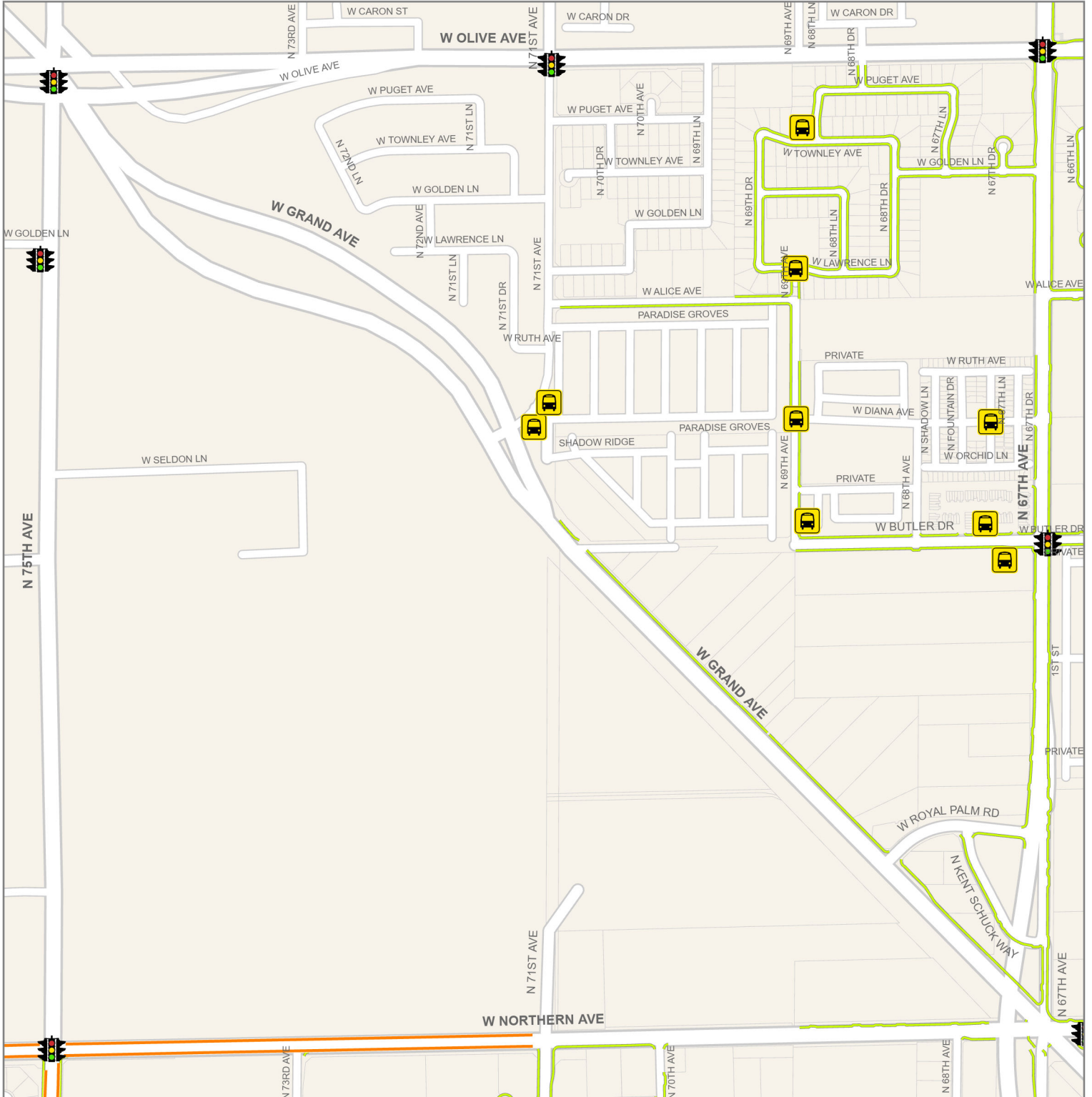
SUNSET VISTA Elementary School

GLENDALE ELEMENTARY SCHOOL DISTRICT

Safe Routes to School

Suggested Route Walking/Biking Map

2024-25 School Year



NOTE: This map is based on imprecise source data, subject to change and is FOR GENERAL REFERENCE ONLY.

Y2K Engineering | 2024



Crossing Guard



Pedestrian Crossing



School Crossing: 15 MPH
w/Crossing Guard



Traffic Circle



Traffic Signal



Safe Route to School



Unpaved Access



School Bus Stop



Fire Station

Pedestrian Crosswalk

School Crosswalk

Bicycle Facility

Sidewalk

Shared Use Path

School Bldg



250 125 0 250 500
Feet



Glendale Elementary School District | Safe Routes to School Map
Copyright © 2024 City of Glendale, AZ

The City of Glendale makes no claims concerning the accuracy of this map nor assumes any liability resulting from the use of the information here on.