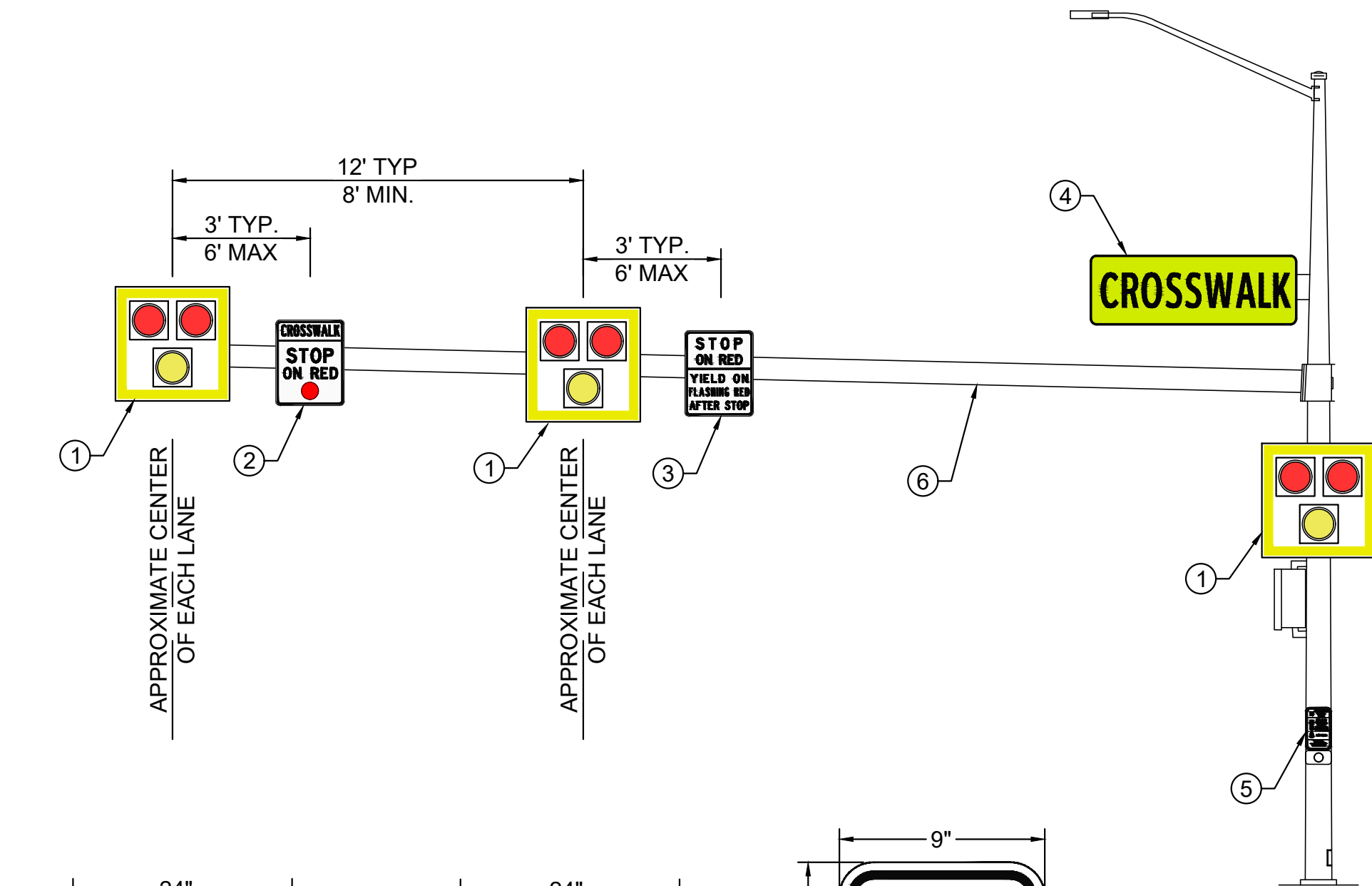


# PEDESTRIAN HYBRID BEACON

DETAIL #: **SS-108B**

City of Glendale  
Transportation Department  
6210 W. Myrtle Ave  
Glendale, AZ 85302  
www.glendaleaz.com

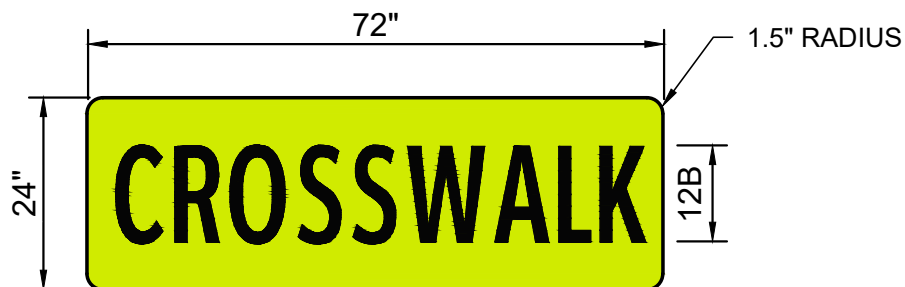
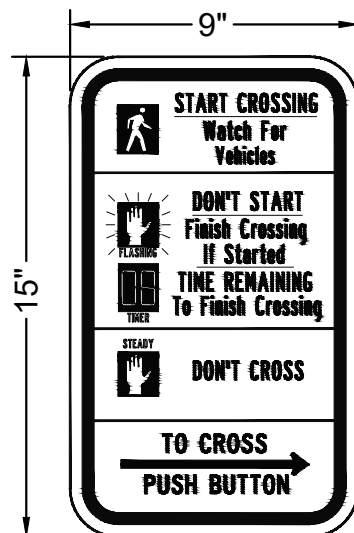
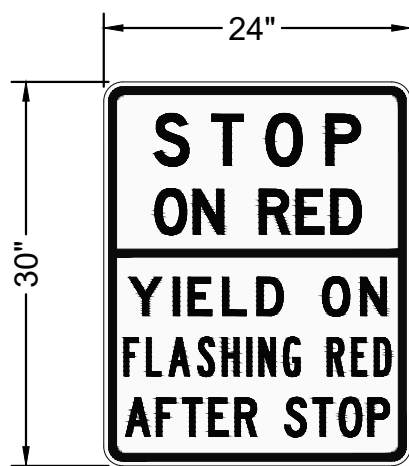
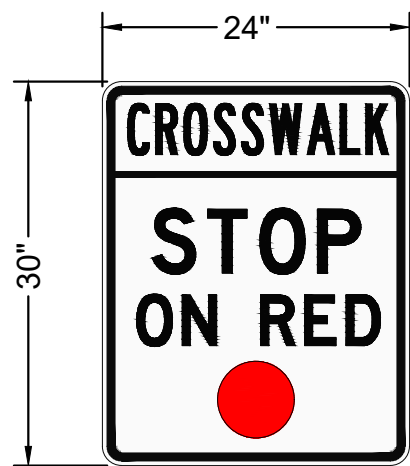


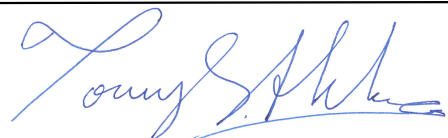
## NOTES:

- ALL REFLECTIVE SHEETING MATERIALS SHALL BE PRESSURE SENSITIVE TYPE XI DIAMOND GRADE SHEETING.
- ALUMINUM SIGN BLANKS SHALL HAVE ROUNDED CORNERS AND A MINIMUM THICKNESS OF 0.080".
- SEE CITY STANDARD DETAIL T5-7 FOR SIGNAL EQUIPMENT HEIGHTS AND CONFIGURATIONS.
- SIGNAL FACE LOCATIONS SHALL COMPLY WITH THE PROVISIONS DESCRIBED IN SECTIONS 4D.05 TO 4D.10 OF THE MUTCD, 11TH EDITION.
- FLOURESCENT YELLOW-GREEN TYPE XI SHEETING SHALL BE USED FOR THE W11-2S CROSSWALK SIGN.

## KEYED NOTES:

- FLASHING BEACON SIGNAL FACE PER CITY STANDARD DETAIL T7-1 TYPE "T" WITH CONTINUOUS 3" FLOURESCENT YELLOW PRISMATIC ASTM D4956 TYPE XI RETROREFLECTIVE BORDER AROUND PERIMETER OF BACKPLATE.
- R10-23 (24"x30") PER MUTCD, 11TH EDITION
- R10-23A (24"x30") PER MUTCD, 11TH EDITION
- W11-2S CROSSWALK SIGN. SEE DETAIL ON THIS SHEET. MOUNTING AND LOCATION PER CITY TRAFFIC AND ITS DETAILS.
- R10-3E SIGN (9"x15") PER CITY STANDARD DETAIL T10-1
- SIGNAL POLE, MAST ARM, AND APPURTENANCES PER CITY STANDARD DETAIL T5-7 (HAWK STYLE)



PEDESTRIAN HYBRID BEACON		DETAIL # <b>SS-108B</b>
APPROVED BY: CITY TRAFFIC ENGINEER		DATE: <b>02 / 2025</b>