



# CLEAN & GREEN 2026

*Working together for a brighter future*



YOUR ONE STOP FOR SERVICE

Receiving service from the city of Glendale is now as easy as 1-2-3!



1. Simply go to [www.GlendaleOne.com](http://www.GlendaleOne.com) or download the GlendaleOne mobile app from the App Store or Google Play.
2. Give us the location where service is needed, select the type of service needed, and opt-in for automatic updates or create an account (optional).
3. Submit your request and receive a confirmation number that includes the expected turnaround time for the issue.

GlendaleOne is easy to use, increases accessibility to city services, and improves service delivery and communication city-wide.

**Key features include:** Automatic escalation to a supervisor if there is a delay, knowledge base of frequently asked questions, automatic location identification and map integration and the ability to include photos or other documents with your service request.

*Outstanding service is our priority, and GlendaleOne demonstrates our commitment to deliver excellence and innovation as we strive to make Glendale the community of choice for residents, businesses and employees.*



# HOUSEHOLD HAZARDOUS WASTE DISPOSAL

## ACCEPTABLE ITEMS

- Aerosol Cans
- Antifreeze and automotive products, including car batteries, motor oil and filters
- Fire Extinguishers
- Gasoline - must be in a certified gas container that will NOT be returned
- Household Cleaners
- Light Bulbs - CFL's only in a labeled box and no fluorescent tubes are allowed
- Mercury
- Paint - in secured container
- Pesticides / Insecticides
- Pool Chemicals
- Propane Tanks - full or empty

## UNACCEPTABLE ITEMS

will NOT be collected:

- Ammunition or Explosives
- Appliances
- Electronics
- Medical waste of any kind
- Landscape waste
- Radioactive Materials
- Tires

*Hazardous waste must be placed on your driveway by the garage.*

*DO NOT place hazardous waste material by the sidewalk or curbside!*

## Pick-up Process & Schedules:

*Twice a year, residents may schedule appointments to have hazardous waste picked up. Easy as 1, 2, 3!*

1. During the appointment dates listed below, schedule a pickup and have a list ready of the items you have for disposal.
2. Place the items out for collection on the scheduled pickup day by 6 a.m.
3. The material is removed on your scheduled day and disposed of safely.

Mark your calendar for the dates listed below to be sure to clear your house of unwanted toxic and hazardous materials.

Call 623-930-2660 to make your appointment.  
[www.glendaleaz.gov/householdhazardouswaste](http://www.glendaleaz.gov/householdhazardouswaste)



## 2026 Household Hazardous Waste Schedule

### SPRING

Appointments: Feb 23 – Mar 13  
Collections: Mar 9 – Mar 27

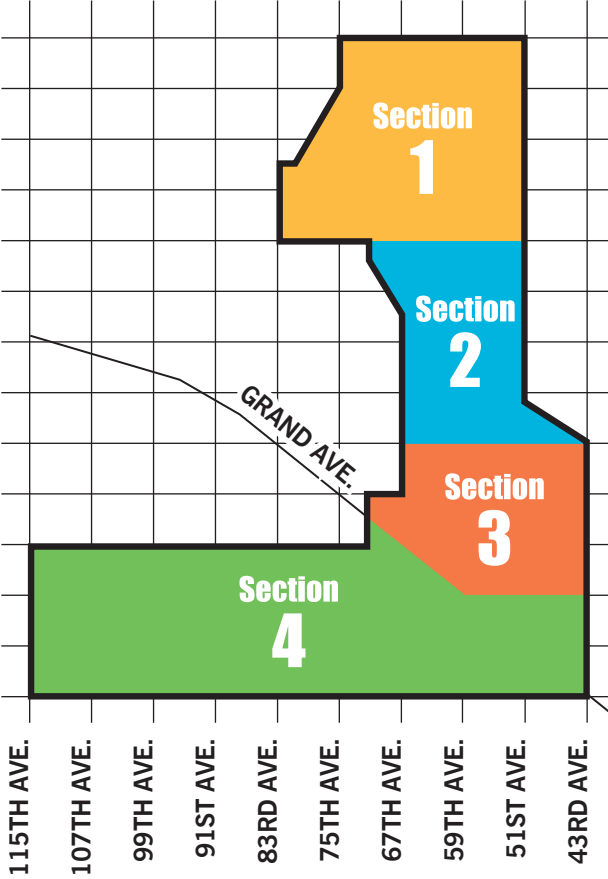
### FALL

Appointments: Sept 14 – Oct 2  
Collections: Sept 28 – Oct 16

# 2026 BULK TRASH PICKUP SCHEDULE

## Bulk Trash is Picking Up!

*As a Glendale resident, you receive once-a-month bulk trash pickup service. Please follow the established bulk trash placement schedule as this will assist in keeping the operational costs down and the collection service timely. Street sweeping will take place 7 to 10 days after bulk trash collection.*



### SECTION 1

January	5-9
February	2-6
March	2-6
April	6-10
May	4-8
June	1-5
July	6-10
August	3-7
September	7-11
October	5-9
November	2-6
December	7-11

### SECTION 2

January	12-16
February	9-13
March	9-13
April	13-17
May	11-15
June	8-12
July	13-17
August	10-14
September	14-18
October	12-16
November	9-13
December	14-18

### SECTION 3

January	19-23
February	16-20
March	16-20
April	20-24
May	18-22
June	15-19
July	20-24
August	17-21
September	21-25
October	19-23
November	16-20
December	21-25

### SECTION 4

January	26-30
February	23-27
March	23-27
April	27 - May 1
May	25-29
June	22-26
July	27-31
August	24-28
September	28 - October 2
October	26-30
November	23-27
December	28 - January 1

# Recycle Right!

Reciclar Bien!



## Acceptable Items

Articulos Aceptables



Plastic Bottles & Containers  
*Bottellas y Recipientes De Plastico*



Paper • Papel



Glass Bottles & Containers  
*Botellas y Recipientes De Plastico*



Flattened Cardboard & Paperboard  
*Carton y Cartulina Aplanados*



Food & Beverage Cans  
*Lata De Comida y Bebida*



Pizza Boxes  
*with minimal residue*  
*Cajas De Pizza*  
*Con Residuos Minimios*



## Recyclables Need to be Clean, Dry and Empty.

After finishing with a recyclable item, rinse as necessary to remove any food. There is no need to remove caps or labels, but do remove non-recyclable items like plastic cereal box inserts. Cardboard needs to be empty of all packing materials and broken down.

All recyclables must be relatively clean, empty and dry. This does not mean putting them through a dishwasher. This is especially important during our current drought period. An example of relatively clean, empty and dry would be a mayonnaise jar that has been wiped clean of residue with a spatula or emptying a soda bottle in the sink. Both of those are clean and dry enough.

There are many polymers of plastic. The plastic industry uses a numbering system that you can find on the bottom of most plastic bottles and containers. Glendale recycles and accepts those with the symbol 1 through 7. Plastic that contains Styrofoam (cups, egg cartons, packing materials and containers) are not recycled in Glendale’s recycling program. All of these do not have ready markets and are not economical to sort and recycle.

## LITHIUM-ION BATTERY SAFETY ALERT

Keep batteries out of your trash and recycling carts!



Lithium-ion batteries (like those found in cell phones, laptops, power tools, and e-bikes) cause serious fire hazards when placed in curbside containers. Fires can ignite in collection trucks or at the landfill—putting workers at risk and costing the City thousands of dollars in damages.

### SAFE DISPOSAL OPTIONS FOR GLENDALE RESIDENTS:

- Schedule a Household Hazardous Waste (HHW) pickup during our seasonal collection events.
- Drop them off at participating battery retailers for recycling.

Together, we can keep Glendale safe, reduce costs and protect our environment!  
Thank you for recycling right!

## KNOW YOUR NO’S

CONOZCA SUS NOES



When in doubt, throw it out!  
*En caso de duda tirarlo!*



NO Plastic bags, Wrap, Film  
*Bolsas de Plastic, Envolvura, Pelicula*



NO Food, Yard Waste, Diapers,  
Pet Food Bags  
*Comida, Desechos de Jardin, Pañales,  
Bolsas de Comida Para Mascotas*



NO Styrofoam or Wax Items  
*Espuma de Poliestireno o Articulos de Cera*



NO Fabrics, Shoes, Toys, Bowling Balls  
*Telas, Zapatos, Juguetes, Bolas de Boliche*



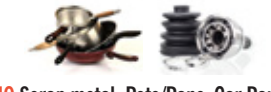
NO Bagged, Boxed “Nesting”  
Recyclables  
*Reciclables “Nesting” en Bolsas o Cajas*



NO PVC, Tupperware, Plastic Hangers  
*Colruro de Polivinilo, Tupperware, Ganchos*



NO Tanglers: Hoses, Wires, Ropes,  
Cords, Wire Hangers, String Lights  
*Enredadores – Mangueras, Alambres,  
Cuerdas, Cordones, Ganchos de  
Alambre, Luces de Cuerda*



NO Scrap metal: Pots/Pans, Car Parts  
*Chatarra, Ollas y Sartenes,  
Piezas de Automovil*



NO Batteries/Baterias



NO Computers, Printers, Cell  
Phones, Electric Appliances  
*Computadoras, Impresoras, Telefono  
Movil, Aparatos Electricos*

### NO HAZARDOUS WASTE!

Automotive Fluids & Products, Paint, Chemicals, Flammables  
*Fluidos y productos automotrices, Pintar, Productos Quimicos, Inflamalbes*

## Reciclables deben estar limpios, secos y vacíos.

Después de terminar con un artículo reciclable, enjuáguelo como sea necesario para eliminar cualquier alimento restante. No tiene que remover las tapas o las etiquetas, pero sí debe remover los artículos que no sean reciclables tales como los insertos de plástico en las cajas de cereal. El cartón debe recortarse y estar vacío de todos los materiales de empaque.

Todos los materiales reciclables deben estar relativamente limpios, vacíos y secos. Esto no significa que debe lavarlos en la lavavajillas. Esto es especialmente importante durante nuestro período actual de sequía. Un ejemplo de artículos relativamente limpios, vacíos y secos sería un frasco de mayonesa al que se le han quitado los residuos con una espátula, o una botella de refresco que se haya vaciado completamente en el fregadero. Ambos artículos están limpios y lo suficientemente secos.

Hay muchos polímeros de plástico. La industria del plástico usa un sistema de numeración que se puede encontrar en la parte inferior de la mayoría de las botellas y de los recipientes de plástico. Glendale recicla y acepta aquellos con los símbolos 1 y 2. Los artículos de plástico que contienen espuma de poliestireno, tales como vasos, cajas de huevos, materiales de empaque y contenedores no se reciclan en el Programa de Reciclaje de Glendale. Todos éstos no cuentan con mercados listos y no es económico separarlos y reciclarlos.

## ALERTA DE SEGURIDAD SOBRE BATERÍAS DE LITIO

iNo coloque las baterías en sus botes de basura o reciclaje!



Las baterías de litio, presentes en teléfonos celulares, computadoras portátiles, herramientas eléctricas y bicicletas eléctricas, pueden causar incendios cuando se tiran en los contenedores de la basura. Estos incendios pueden comenzar en los camiones de recolección o en el vertedero, poniendo en peligro a los trabajadores y causando daños costosos a la Ciudad de Glendale.

### OPCIONES SEGURAS:

- Programe una recolección gratuita de Residuos Peligrosos del Hogar (HHW) o llévelas a tiendas participantes para su reciclaje.

iGracias por reciclar correctamente y mantener a la ciudad de Glendale segura!



# RESIDENTIAL REBATES



IRRIGATION  
TECHNOLOGY

UP TO  
\$750

**Glendale**  
WATER SERVICES

POOL/SPA  
REMOVAL

UP TO  
\$800



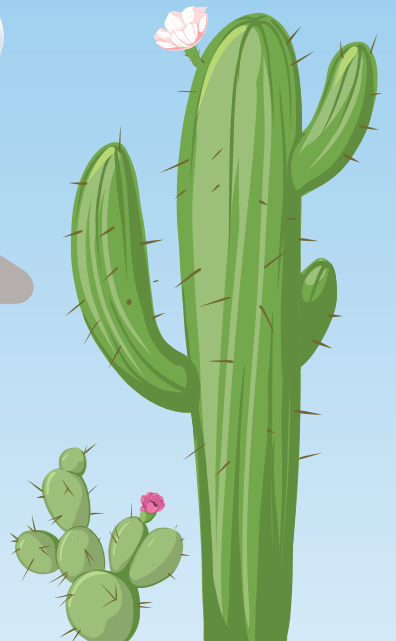
ENERGY STAR  
CLOTHES  
WASHER

UP TO  
\$200



WATERSENSE  
TOILET

UP TO  
\$100



UP TO **\$3000**  
for xeriscape (\$1.00/SF)

UP TO **\$250**  
for artificial grass (\$0.25/SF)

LANDSCAPE

**GLENDALÉAZ.GOV/REBATES**

**(623) 930-3596**

## Resident Checklist for Pick-up Day

- Bins at curb by 6 a.m. on collection day
- Lid closed, no overflow
- No hazardous waste, rocks, or construction debris
- Only clean, dry, empty items in the recycling bin
- Place trash and recycling containers 3 feet apart and 10 feet away from parked vehicles for better service

## Top 3 Solid Waste Pick-up Mistakes



Overflowing Bins



**Fix it!**  
Do you need  
an extra bin?  
Call us!



Trash in Recycling



**Fix it!**  
No styrofoam,  
plastic bags,  
yard waste,  
food waste,  
paper plates



Bins Blocked by Cars



**Fix it!**  
Keep 10 feet  
of clearance



## Stay Informed

- Missed pickup? Report online at **GlendaleOne.com**
- More Info at **glendaleaz.gov/recycling**

## Solid Waste Container Lid Rules

- Lids must be closed at all times (health code requirement)
- Overfilled bins may not be serviced
- Need extra space?  
Request an additional bin (fee applies)



## If it Fits in the Bin, Toss it In!

- Use your garbage bin for small items
- Bulk Trash is for large items only
- Helps keep service fast and costs low

## Other Disposal Options

- **LANDFILL:** 1 ton free/month with water bill & ID ([glendaleaz.gov/landfill](http://glendaleaz.gov/landfill))
- **SPECIAL BULK PICKUP:** Check website for additional charges
- **APPLIANCES WITH FREON:** Check website for additional charges
- **ROLL-OFF CONTAINERS:** Available for remodels/cleanups (call 623-930-2660)







## Monthly Bulk Trash Service

For large items that don't fit in your garbage bin, including furniture, appliances, tree limbs and brush.

### WHEN TO PLACE ITEMS OUT:

- No earlier than 6 a.m. Thursday before service week
- No later than 6 a.m. Monday of service week
- Violations = No pickup & items must be removed until next month

### Do's:

- Place items within 4 ft of sidewalk, neatly stacked
- Max item length: 4 ft (except bulky items like couches)
- Glass: Boxed (2x2x2 ft), taped & labeled "glass"
- Refrigerators: \$25 fee, call 623-930-2660 for pickup

### Don'ts:

- No construction debris, dirt, rocks, hazardous waste, tires, or styrofoam
- Don't block containers, meters, hydrants, walls (keep 2 ft clearance)
- Don't stack piles over 6 ft high
- Don't park within 10 ft of piles
- No trash in alleys

Service may be denied for safety or health hazards



# JANUARY

## Clean & Green 2026

SUNDAY	MONDAY	TUESDAY	WEDNESDAY	THURSDAY	FRIDAY	SATURDAY
28	29	30	31	1 New Year's Day City Offices Closed No Solid Waste Collection	2	3
4	5 Bulk Trash Section 1	6	7	8	9	10
11	12 Bulk Trash Section 2	13	14	15	16	17 MLK Day of Service Volunteer Project
18	19 Dr. Martin Luther King Jr. Day City Offices Closed	20	21	22	23	24
	25	26 Bulk Trash Section 3	27	28	29	30
25	26 Bulk Trash Section 4	27	28	29	30	31

## MLK Day of Service Saturday, January 17

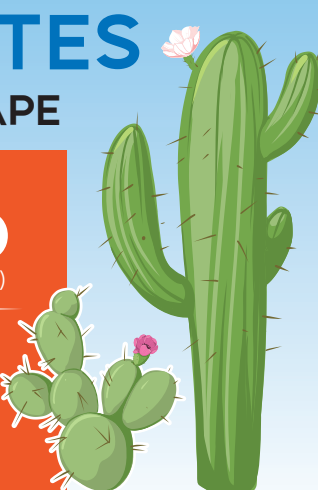
Throughout his life, Dr. Martin Luther King Jr. advocated for peace, unity and service. MLK Day of Service is an annual tribute to the life of Dr. King and a way to donate vitamin-rich citrus to families in need. In partnership with HandsOn Greater Phoenix and St. Mary's Food Bank Alliance, we are looking for 200 volunteers to help glean fruit. The community can also drop off homegrown citrus donations for St. Mary's Food Bank Alliance. For more information, email [communityengagement@glendaleaz.com](mailto:communityengagement@glendaleaz.com).

## RESIDENTIAL REBATES

### LANDSCAPE

UP TO \$3000  
for xeriscape (\$1.00/SF)

UP TO \$250  
for artificial grass (\$0.25/SF)



[GLENDALEAZ.GOV/REBATES](http://GLENDALEAZ.GOV/REBATES)

THANKSGIVING

Christmas

New Year's Day

### RESIDENTIAL SOLID WASTE COLLECTIONS HOLIDAYS

Solid Waste collection schedules are only affected on these three holidays. For more information, please consult this calendar or visit [www.glendaleaz.gov/holidayschedule](http://www.glendaleaz.gov/holidayschedule)

YOUR ONE STOP FOR SERVICE

[www.glendaleone.com](http://www.glendaleone.com)





Scan for updated recycling info

## Household Hazardous Waste Appointments!

Call between February 23 & March 13 to schedule a pick-up.  
Schedule appointments at 623-930-2660.  
For more information, visit [www.glendaleaz.gov/householdhazardouswaste](http://www.glendaleaz.gov/householdhazardouswaste).

## Is it Recyclable? Ask the Waste Wizard!

Before you toss it - check it! The Waste Wizard makes it easy to find out what belongs in your blue recycling bin and what doesn't.

- Search by item name
- Get quick answers
- Avoid contamination - repeated misuse may lead to removal of your recycle bin and additional monthly trash charges

Visit [www.glendaleaz.gov/recycling](http://www.glendaleaz.gov/recycling) and let the Waste Wizard guide you!

## Play the Sorting Game!

Complete the game and print your own Certificate of Achievement! Go to [www.glendaleaz.gov/recycling](http://www.glendaleaz.gov/recycling) and play today!

## Did You Know?

- Recycling one aluminum can saves enough energy to power a TV for 3 hours.
- Plastic bags don't belong in your blue bin — recycle them at grocery stores instead.
- Flatten cardboard boxes before placing them in your bin.

# FEBRUARY *Clean & Green* 2026

SUNDAY	MONDAY	TUESDAY	WEDNESDAY	THURSDAY	FRIDAY	SATURDAY
1	2Bulk Trash Section 1	3	4	5	6	7
8	9Bulk Trash Section 2	10	11	12	13	1420th Annual Glendale Serve Day
15	16Bulk Trash Section 3 Presidents' Day City Offices Closed	17	18	19	20	21
22	23Bulk Trash Section 4	24	25	26	27	28Folk & Heritage Festival
1Folk & Heritage Festival	2	3	4	5	6	7
8	9	10	11	12	13	14

## Illegal Dumping

Illegal dumping is unsightly, costly, and reduces neighborhood pride. Cleanup takes valuable City resources away from other services. To help, Glendale provides residents with easy disposal options. Each household may drop off one ton of material per month at the Glendale Municipal Landfill free of charge. Any additional loads brought in the same month are \$15.79/ton. The City also offers monthly bulk trash pickup, giving residents curbside collection of large items that won't fit in containers. To report illegal dumping, call the Glendale Police Department non-emergency line at 623-930-3000.

## Glendale Municipal Landfill

The city of Glendale Municipal Landfill is located at 11480 W. Glendale Avenue, on the north side of the road. The landfill is a responsible, progressive and an environmentally sound long-term solution to solid waste management, essential to the future health, welfare and prosperity of residents.

**HOURS OF OPERATION:**  
**Monday – Friday: 7:30 a.m. - 4 p.m.**  
**Saturday: 7 a.m. - 3 p.m.**  
**Closed: Sundays & official city holidays**  
[www.glendaleaz.gov/landfill](http://www.glendaleaz.gov/landfill)





## Glendale’s Drought Response

The federal government declared a Tier 1 shortage for the Colorado River System for 2026. This mandate reduces the city of Glendale’s Colorado River water supply by less than 1%. In response to this reduction, Glendale will remain in Stage One – Drought Watch of the City’s Drought Management Plan (DMP) and continue to offer water conservation programs and incentives for Glendale water customers. Glendale municipal properties and operations will continue to meet a 5% water reduction goal, and water customers are encouraged to voluntarily reduce their water use.

## Many Ways to Save Water

Glendale offers a variety of free programs and services to help customers save water:

- Remove thirsty grass or an unwanted in-ground pool/spa and get a rebate
- Upgrade to a WaterSense toilet or irrigation controller, or an ENERGY STAR clothes washer, and get a rebate
- Request a free water conservation kit
- Report irrigation water waste at [www.glendaleone.com](http://www.glendaleone.com)
- Stay connected! Register for the Green Living newsletter to get monthly tips and updates



For more information, call 623-930-3596 or visit [www.glendaleaz.gov/waterconservation](http://www.glendaleaz.gov/waterconservation)

# MARCH *Clean & Green* 2026

SUNDAY	MONDAY	TUESDAY	WEDNESDAY	THURSDAY	FRIDAY	SATURDAY
Folk & Heritage Festival						
1	2Bulk Trash Section 1	3	4	5	6	7
8	9Bulk Trash Section 2	10	11	12	13	14
	EPA WaterSense Fix-A-Leak Week   <a href="http://www.epa.gov/watersense/fix-leak-week">www.epa.gov/watersense/fix-leak-week</a>					
15	16Bulk Trash Section 3	17	18	19	20	21
22	23Bulk Trash Section 4	24	25	26	27	28
29	30No Bulk Trash Service	31	1	2	3	4
5	6	7	8	9	10	11

### RESIDENTIAL WATER CONSERVATION REBATES

UP TO \$200

ENERGY STAR CLOTHES WASHER

UP TO \$100

WATERSENSE TOILET

IRRIGATION TECH

UP TO \$750

POOL/SPA REMOVAL

UP TO \$800

LANDSCAPE/XERISCAPE

UP TO \$3000 for xeriscape (\$1.00/SF)

UP TO \$250 for artificial grass

For full program requirements and eligibility visit [www.glendaleaz.gov/rebates](http://www.glendaleaz.gov/rebates) or call 623.930.3596





APRIL

Clean & Green  
2026

SUNDAY	MONDAY	TUESDAY	WEDNESDAY	THURSDAY	FRIDAY	SATURDAY
29	30	31	1	2	3	4
5	6 <div>Bulk Trash Section 1</div>	7	8	9	10	11
12	13 <div>Bulk Trash Section 2</div>	14	15	16	17	18
19	20 <div>Bulk Trash Section 3</div>	21	22 <div>Earth Day</div>	23	24 <div>Arbor Day</div>	25
26	27 <div>Bulk Trash Section 4</div>	28	29	30	1	2
3	4	5	6	7	8	9

## Valley Bike Month

The city of Glendale invites you to take advantage of the benefits of biking during Valley Bike Month this April. Whether it’s a ride to work, a lunch break from your home office, or a weekend ride around the neighborhood with family or friends, get on your bike and go for a spin!

Bicycling is beneficial to both the environment and your health. It’s a great form of exercise, good for your physical and mental health, and a convenient mode of transportation that doesn’t pollute the environment or add to traffic congestion. It’s a win for everyone!

Valley Bike Month offers a variety of ways to participate, including the Bike Month Pledge, Team Challenges, and Share the Ride Contests. To learn more about Valley Bike Month events, go to <https://sharetheride.com>.

The city of Glendale also has its own bike event in April, the Glendale Family Bike Ride, which attracts cyclists from all over the Valley. Each year, the event kicks off at Sahuaro Ranch Park and is open to riders of all ages and skill levels. Registration opens in February at [www.glendaleaz.gov/familybikeride](http://www.glendaleaz.gov/familybikeride).

## Traffic Signal Optimization Program

The city of Glendale Transportation Department received grant funding for two Traffic Signal Optimization Program (TSOP) projects. The funding was awarded as part of MAG’s (Maricopa Association of Governments) Intelligent Transportation Systems Program.

The two corridors involved in the projects were:

- 75th Ave: from W Camino San Xavier to Deer Valley Rd
- 59th Ave: from Camelback Rd to Mohawk Ln

The project implemented optimized traffic signal timing plans for:

- AM, Midday, and PM peak hours
- Along major North/South corridors of the city

Traffic signal optimization benefits:

- Cost-effective method to improve traffic flow
- Enhances street safety and efficiency
- Reduces idle and stop time at intersections through coordinated signal timing
- Decreases vehicle emissions, contributing to cleaner air

This project reflects Glendale’s use of technology to improve environmental sustainability and traffic management.

## Long-Range Transportation Plan

The city of Glendale recently kicked off the Long-Range Transportation Plan. This plan is a blueprint that identifies the vision, goals and objectives for future transportation improvements around the city. This plan examines the City’s current conditions and engages the community to identify the needs of all users and all modes of transportation. Providing facilities to accommodate alternative modes of transportation allows for the reduction of fuel usage and decrease in vehicle emissions, as well as improvement of public health. This plan will guide the City to develop a sustainable, equitable, and environmentally conscious transportation system.





## Understanding Your Monthly Sewer Charges

Sewer bills are based on average water usage. Glendale calculates sewer usage based on the water use billed January through March. In May, you may notice a change in the monthly sewer fee on your water bill. If you are aware of high water use between January and March, you may be eligible for a fee adjustment and must submit a Sewer Appeal form. Visit [www.glendaleaz.gov](http://www.glendaleaz.gov) and type “Sewer Appeal” into the search bar. Appeals are accepted up to 90 days after the May billing.

### Examples of typical sewer appeals:

- Leaks (January through March bills)
- Filling a new pool or draining and refilling an existing pool (January through March bills)
- Outdoor watering during the winter months, typically associated with larger than normal landscaping

New residents or customers who do not have a full 3 months’ winter water usage, will be assigned usage based on the average of all customers with a similar type of property. For more information, call 623-930-3190.

## Report Landscape Water Waste

Water is a precious resource and it’s important to use it wisely. If you see landscape-related water waste, take a photo and report it at [www.glendaleone.com](http://www.glendaleone.com) or call 623-930-3535.



# MAY

## Clean & Green 2026

SUNDAY	MONDAY	TUESDAY	WEDNESDAY	THURSDAY	FRIDAY	SATURDAY
26	27	28	29	30	1	2
Drinking Water Week   <a href="http://www.awwa.org">www.awwa.org</a>						
3	4 Bulk Trash Section 1	5	6	7	8	9
10	11 Bulk Trash Section 2	12	13	14	15	16
17	18 Bulk Trash Section 3	19	20	21	22	23
	Memorial Day City Offices Closed					
24	25 Bulk Trash Section 4	26	27	28	29	30
31	1	2	3	4	5	6

## Glendale Water Quality

The Water Services Department tests, analyzes and monitors water quality several times a day to ensure that the water provided is clean and safe. Check out the Water Quality Report at [www.glendaleazwater.com](http://www.glendaleazwater.com)



## RESIDENTIAL REBATES

### IRRIGATION TECH

UP TO \$750



GLENDALEAZ.GOV/REBATES





JUNE

Clean & Green  
2026

SUNDAY	MONDAY	TUESDAY	WEDNESDAY	THURSDAY	FRIDAY	SATURDAY
31	1Bulk Trash Section 1	2	3	4	5	6
7	8Bulk Trash Section 2	9	10	11	12	13
14	15Bulk Trash Section 3	16	17	18	19	20
21	22Bulk Trash Section 4	23	24	25	26	27
28	29No Bulk Trash Service	30	1	2	3	4
5	6	7	8	9	10	11

## Monsoon Season Begins June 15

Polluted stormwater runoff is the nation’s greatest threat to clean water. When it rains, stormwater flows over driveways and streets picking up dangerous pollutants which end up in our washes, retention areas, and parks where they can have adverse effects on the environment and people.

**What YOU can do to protect our local waterways:**

- Sweep debris off driveways, sidewalks, and dispose of it in the trash can.
- Pick up pet waste and dispose of it properly.
- Minimize the use of pesticides, herbicides, and fertilizers and avoid using them before it rains.
- Per City Code: keep irrigation water on your landscape, and only drain or backwash your pool water into the sanitary sewer. Do not put irrigation water in the street!
- Never pour chemicals down the storm drain! Schedule a household hazardous waste disposal pick-up with the Glendale Solid Waste Division at 623-930-2660.

For more information, visit [www.glendaleaz.gov/environmentalprotection](http://www.glendaleaz.gov/environmentalprotection).

*If you experience extra debris caused by monsoon storms, contact customer service at 623-930-2660.*

## Outdoor Watering Tips

- Sign up for monthly watering reminders by texting WHENTOWATER to 1-844-416-1428.
- Got at least ½” of rain? Skip an irrigation cycle by setting your controller to OFF, STOP, or RAIN.

## National Flood Insurance Program

FEMA Floodplain Insurance, officially known as the National Flood Insurance Program (NFIP), is a federal program managed by FEMA. It provides flood insurance to property owners, renters, and businesses in participating communities. FEMA Flood Insurance policies cover buildings, their contents, or both. This helps protect against financial losses due to flood damage, which likely is not covered by standard homeowner insurance. To purchase floodplain insurance, you can contact your insurance company or agent. If your insurance agent cannot provide flood insurance, you can contact the FEMA Mapping and Insurance eXchange (FMIX) center at 1-877-336-2627 or by emailing [FEMA-FMIX@fema.dhs.gov](mailto:FEMA-FMIX@fema.dhs.gov) to request an insurance agent referral. For more information, visit [www.floodsmart.gov](http://www.floodsmart.gov).

## Rainwater Harvesting

Too much water near your home’s foundation can create mold and lead to pests and structural damage. Redirect rainwater away from your home and into the landscape. Rainwater harvesting can be as simple as grading the landscape and creating basins and berms that allow rainwater to slow, spread, and sink into the landscape. A more complex system can include a gutter, downspout, cistern, pump, and distribution system. As with any landscape project, research first and develop a landscape plan and budget.





JULY

Clean & Green  
2026

SUNDAY	MONDAY	TUESDAY	WEDNESDAY	THURSDAY	FRIDAY	SATURDAY
					Independence Day Holiday City Offices Closed	Independence Day
28	29	30	1	2	3	4
5	6 Bulk Trash Section 1	7	8	9	10	11
12	13 Bulk Trash Section 2	14	15	16	17	18
19	20 Bulk Trash Section 3	21	22	23	24	25
26	27 Bulk Trash Section 4	28	29	30	31	1
2	3	4	5	6	7	8

## National Park & Recreation Month

Park and Recreation Month has been celebrated nationally since July 1985 to promote building strong, vibrant and resilient communities. Park and recreation professionals make a positive impact on the lives of community members every day through recreation and education programming and maintaining safe neighborhood parks and facilities for the well-being of children and adults.

We welcome you to experience the outstanding parks, recreation programs, facilities, and services that Glendale offers. For more information, visit [www.glendaleaz.gov/parksandrec](http://www.glendaleaz.gov/parksandrec).

## You Can Help Reduce Air Pollution

Ground level ozone forms in the summer months when vehicle emissions and activities using gasoline, paints, solvents, and other chemicals react with the sunlight and heat. Help reduce ozone pollution by fueling your vehicle after dark, teleworking, avoiding idling in drive-thrus, and scheduling home improvement projects in the cooler months. For more tips and information, visit [Maricopa.gov/AQCleanAir](http://Maricopa.gov/AQCleanAir).

## America’s 250th Birthday

This July, we celebrate America’s 250th birthday-honoring our nation’s history and celebrating our resilience as a country. We invite all residents to join in recognizing this historic milestone for our great nation!

## Fireworks Safety Reminder!



- Always soak used fireworks in water overnight
- Wet fireworks help prevent fires in our trucks and neighborhood! (Don’t be the person who starts a garbage truck fire!)
- Never put used fireworks in the blue bin

RESIDENTIAL  
REBATES

WATERSENSE  
TOILET

UP TO  
\$100

GLENDALEAZ.GOV/REBATES





## Right-of-Way Landscape Restoration Plan

The Transportation Right-of-Way Landscaping Division is committed to maintaining landscapes that are not only visually appealing but also sustainable. As part of this effort, the Landscape Restoration Plan was approved by City Council in January 2023. This seven-year plan focuses on creating a landscape infrastructure that balances water conservation and aesthetics. Key initiatives include drought-tolerant plants, decorative rock, and water-harvesting techniques that capture stormwater for irrigation.

Building on these measures, the Division is also incorporating smart irrigation controllers—devices that use sensors and weather data to optimize watering, thereby reducing water waste and improving plant health. The benefits of incorporating smart irrigation systems are remote control operation, reduced water consumption, the ability to quickly spot and fix leaks, reduced maintenance, tracking water use over time, and better zone control.

Equally important has been the role of public engagement with residents voicing strong support for the focus on sustainable practices and water conservation. Together, these efforts will ensure that Glendale’s right-of-way landscapes remain environmentally friendly and visually appealing. With 14 miles of restoration already complete and another 22 miles planned by 2030, the Division is advancing a model of urban landscaping that conserves water, reduces heat island effects, improves air quality, and enhances community pride.

# AUGUST

## Clean & Green 2026

SUNDAY	MONDAY	TUESDAY	WEDNESDAY	THURSDAY	FRIDAY	SATURDAY
26	27	28	29	30	31	1
2	3Bulk Trash Section 1	4	5	6	7	8
9	10Bulk Trash Section 2	11	12	13	14	15
16	17Bulk Trash Section 3	18	19	20	21	22
23	24Bulk Trash Section 4	25	26	27	28	29
30	31No Bulk Trash Service	1	2	3	4	5

## Active Transportation Plan / Projects Update

Active Transportation describes person-powered ways of getting around our streets, such as walking, bicycling, rolling a wheelchair, or a mobility device. The City’s Active Transportation Plan (ATP) focuses on developing a complete active transportation network that encourages physical activity and sustainability, as well as provides residents with transportation choices. Various projects identified in the ATP have been completed and additional ones are underway, which will help pave the way for a strong, active transportation network.

- **Central Core Sidewalk Infill near downtown** – The project improves sidewalk connectivity and pedestrian mobility by constructing missing sidewalk segments.
- **Maryland Active Transportation Improvements** – This project is to infill missing sidewalks and improve bicycle facilities in the area between Maryland Avenue and Bethany Home Road.
- **Missouri Active Transportation Improvements** – The project is to infill missing sidewalks and improve bicycle facilities in the area immediately west of Grand Avenue, between Missouri Avenue and Bethany Home Road.





### WHAT CAN YOU DO WITH A GLENDALE LIBRARY CARD?

- 24/7 online access to books, movies & music
- Free concerts, craft programs storytimes, and more!
- Free Internet and Wifi Access
- Remote printing
- Meeting and study rooms
- Free access to local museums
- Seasonal seeds to "check out" and plant
- And so much more!!!

**SEPTEMBER IS LIBRARY CARD SIGN UP MONTH!**

### Seed Library

Visit a Glendale Public Library to “checkout” free seeds from the Seed Library. Seeds are sourced from Native Seeds/SEARCH and provided by the Glendale Water Services Department – Conservation & Sustainable Living Division. For more information, visit [library.glendaleaz.gov/Home](http://library.glendaleaz.gov/Home).

# SEPTEMBER

## Clean & Green 2026

SUNDAY	MONDAY	TUESDAY	WEDNESDAY	THURSDAY	FRIDAY	SATURDAY
30	31	1	2	3	4	5
	Labor Day City Offices Closed					
6	7 Bulk Trash Section 1	8	9	10	11	12
13	14 Bulk Trash Section 2	15	16	17	18	19
20	21 Bulk Trash Section 3	22	23	24	25	26
27	28 Bulk Trash Section 4	29	30	1	2	3
4	5	6	7	8	9	10

### Household Hazardous Waste Appointments!

**Call between September 14 & October 2 to schedule a pick-up.**

Collections run from September 28 through October 16. Check your shed and garage for unwanted hazardous items. Place items in a box marked “HHW” with everything clearly labeled in the original container. Schedule appointments at 623-930-2660. For more information, visit [www.glendaleaz.gov/householdhazardouswaste](http://www.glendaleaz.gov/householdhazardouswaste)

## RESIDENTIAL REBATES

### POOL/SPA REMOVAL

UP TO \$800

[GLENDALEAZ.GOV/REBATES](http://GLENDALEAZ.GOV/REBATES)





## National Teen Driver Safety Week Oct 18-24

October 18-24, 2026, is National Teen Driver Safety Week. Motor vehicle crashes are the leading cause of death for teens and young adults (15-24 years old) in the United States. Distracted driving is one of the fastest-growing safety issues on the roads today.

To address this concern, the city of Glendale has partnered with the National Safety Council and Glendale high schools to teach young drivers how to take control of driving situations by taking personal responsibility for their own actions, attitudes and behaviors using the Alive at 25 defensive driving training program.

## Transit Services

Transit offers a variety of convenient and affordable transportation options for Glendale residents and visitors, including:

- Fixed-Route Bus Service
- Glendale Urban Shuttle (GUS) Bus Service
- ADA Paratransit Service
- Taxi Voucher Program
- Microtransit – On-Demand Service

For more information about these services, call 623-930-2940. For Valleywide fixed-route bus schedules and details on transit education programs, visit [www.glendaleaz.gov/publictransportation](http://www.glendaleaz.gov/publictransportation).

## Safety Action Plan

The City initiated work on a Safety Action Plan to reduce or eliminate traffic fatalities and severe injuries, while increasing safe, healthy, equitable mobility for all users.

# OCTOBER *Clean & Green* 2026

SUNDAY	MONDAY	TUESDAY	WEDNESDAY	THURSDAY	FRIDAY	SATURDAY
27	28	29	30	1	2	3
4	5Bulk Trash Section 1	6	7	8	9	10
11	12Bulk Trash Section 2	13	14	15	16	17
National Teen Driver Safety Week						
18	19Bulk Trash Section 3	20	21	22	23	24
						Halloween
25	26Bulk Trash Section 4	27	28	29	30	31
1	2	3	4	5	6	7

## Be a Neat Neighbor

The Glendale Code Compliance Division enforces city codes that promote health and safety, and protect the community from blight and deterioration. Let’s work together to enhance the livability of Glendale by removing outdoor storage, maintaining landscaping so that grass and weeds are kept below 6 inches as stated in city code, obtaining building permits for property modifications, etc. For more information visit [www.glendaleaz.gov/codecompliance](http://www.glendaleaz.gov/codecompliance) or call 623-930-3610.

### RESIDENTIAL REBATES

ENERGY STAR CLOTHES WASHER

UP TO \$200

GLENDALEAZ.GOV/REBATES





## Glendale Collects Cell Phones for America Recycles Day

Time to clean out the drawers for those old cell phones! In celebration of America Recycles Day on November 15, Glendale has developed a special cell phone recycling program throughout November. The cell phones will go to the Glendale Family Advocacy Center to be refurbished and will become available for victims of stalking and domestic violence. Statistics show that cell phones are replaced after only 18 months of use. It is important to keep cell phones out of landfills. For drop-off locations, visit [www.glendaleaz.gov/recycling](http://www.glendaleaz.gov/recycling) or call 623-930-2660.



**NO ELECTRONICS  
IN RECYCLE BINS**



**NO Computers, Printers, Cell Phones,  
Electric Appliances**

*When non-recyclable items enter the recycle stream it's called contamination, which increases rates. Learn to help us kick it to the curb by visiting [www.glendaleaz.gov/recycling](http://www.glendaleaz.gov/recycling).*

# NOVEMBER

## Clean & Green 2026

SUNDAY	MONDAY	TUESDAY	WEDNESDAY	THURSDAY	FRIDAY	SATURDAY
1	2Bulk Trash Section 1	3	4	5	6	7
8	9Bulk Trash Section 2	10	Veterans Day City Offices Closed	12	13	14
America Recycles Day 15	16Bulk Trash Section 3	17	18	19	20	21
22	23Bulk Trash Section 4	24	25	Thanksgiving Day City Offices Closed No Solid Waste Collection 26	Thanksgiving Holiday City Offices Closed 27	28
29	30No Bulk Trash Service	1	2	3	4	5

## Cease the Grease

Avoid pouring fats, oils, and grease (FOG) down the kitchen drain, sinks, or toilets to prevent pipe blockages, sewage backup, and environmental damage. Keep grease out of your drains and follow best practices to avoid sewer blockages.

- Allow used cooking oil to cool and solidify before disposing of it in the trash
- Scrape food residue from dishes into the trash before washing
- Use paper towels to remove excess grease from cookware

## Think Before You Flush

**Protect Glendale's sewer system and the environment. Do NOT flush:**

- Paper towels and napkins
- Cotton balls and cotton swabs
- Floss
- Feminine hygiene products
- All disposable and flushable wipes
- Diapers
- Medications
- Syringes and needles
- Kitty litter
- Trash



For more information, visit [www.glendaleaz.gov/environmentalprotection](http://www.glendaleaz.gov/environmentalprotection)

**THANKSGIVING**

**Christmas**

**New Year's Day**

**RESIDENTIAL  
SOLID WASTE  
COLLECTIONS  
HOLIDAYS**

Solid Waste collection schedules are only affected on these three holidays. For more information, please consult this calendar or visit [www.glendaleaz.gov/holidayschedule](http://www.glendaleaz.gov/holidayschedule)

**GlendaleOne**  
YOUR ONE STOP FOR SERVICE

[www.glendaleone.com](http://www.glendaleone.com)





Photo: Paolo Cascio

DECEMBER

Clean & Green  
2026

SUNDAY	MONDAY	TUESDAY	WEDNESDAY	THURSDAY	FRIDAY	SATURDAY
29	30	1	2	3	4	5
6	7 <div>Bulk Trash Section 1</div>	8	9	10	11	12
13	14 <div>Bulk Trash Section 2</div>	15	16	17	18	19
20	21 <div>Bulk Trash Section 3</div>	22	23	24	25 <div>Christmas City Offices Closed No Solid Waste Collection</div>	26
27	28 <div>Bulk Trash Section 4</div>	29	30	31	1 <div>Happy New Year! City Offices Closed No Solid Waste Collection</div>	2

THANKSGIVING

Christmas

New Year's Day

RESIDENTIAL  
SOLID WASTE  
COLLECTIONS  
HOLIDAYS

Solid Waste collection schedules are only affected on these three holidays. For more information, please consult this calendar or visit [www.glendaleaz.gov/holidayschedule](http://www.glendaleaz.gov/holidayschedule)

## Save Water and Lower Your Sewer Fee

Did you know? Water use billed in January, February, and March is used to calculate your annual sewer fee. Starting in December, reduce your water use to lower your sewer charge.

### Easy tips to lower your monthly water bill:

- Fix leaky toilets, faucets, and showerheads
- Fix irrigation and pool leaks
- Adjust your irrigation schedule monthly
- Make water-efficient upgrades and get paid! Learn more at [www.glendaleaz.gov/rebates](http://www.glendaleaz.gov/rebates)
- Find 100+ water saving tips at [wateruseitwisely.com](http://wateruseitwisely.com)

If you have a leak or fill your pool during the sewer average period, you can submit a sewer appeal. For more information, visit [www.glendaleaz.gov/billing](http://www.glendaleaz.gov/billing).

## From the Heart

From the Heart (FTH) is a unique partnership of Glendale residents, the city of Glendale, and local community agencies. FTH puts your donation to work every day. Whether serving meals to the elderly, giving emergency help to homeless families, or supporting abused children, FTH gives to non-profit agencies that provide services to our community. Since FTH began in 1997, more than \$2.5 million has been raised and distributed to non-profit agencies serving Glendale residents. Donate today! For more information, visit [www.glendaleaz.gov/grants](http://www.glendaleaz.gov/grants).

## Burn Cleaner, Burn Better

Keep our air clean and breathe easier, don't burn wood on a No Burn Day! Convert your wood burning fireplace to natural gas or electric, or switch to other cleaner-burning alternatives. You can still enjoy the glow of a warm fire while reducing harmful smoke pollution! For the latest air quality forecast and No Burn Day status, download the free Clean Air Mobile App through the App Store or Google Play, visit [Maricopa.gov/AQCleanAir](http://Maricopa.gov/AQCleanAir) each day, or call 602-506-6400.

## 'Tis the Season to Treecycle

Beginning December 26 through January 4

The Solid Waste Department has established several sites throughout the city where residents can drop off trees for recycling: (single, unbagged tree, remove all decorations, tree stands, metal stakes and nails).

For Treecycle locations, call 623-930-2660 or visit [www.glendaleaz.gov/recycling](http://www.glendaleaz.gov/recycling)

