

What trees will survive and thrive?

Choose trees equipped for the heat and tolerant of infrequent watering.



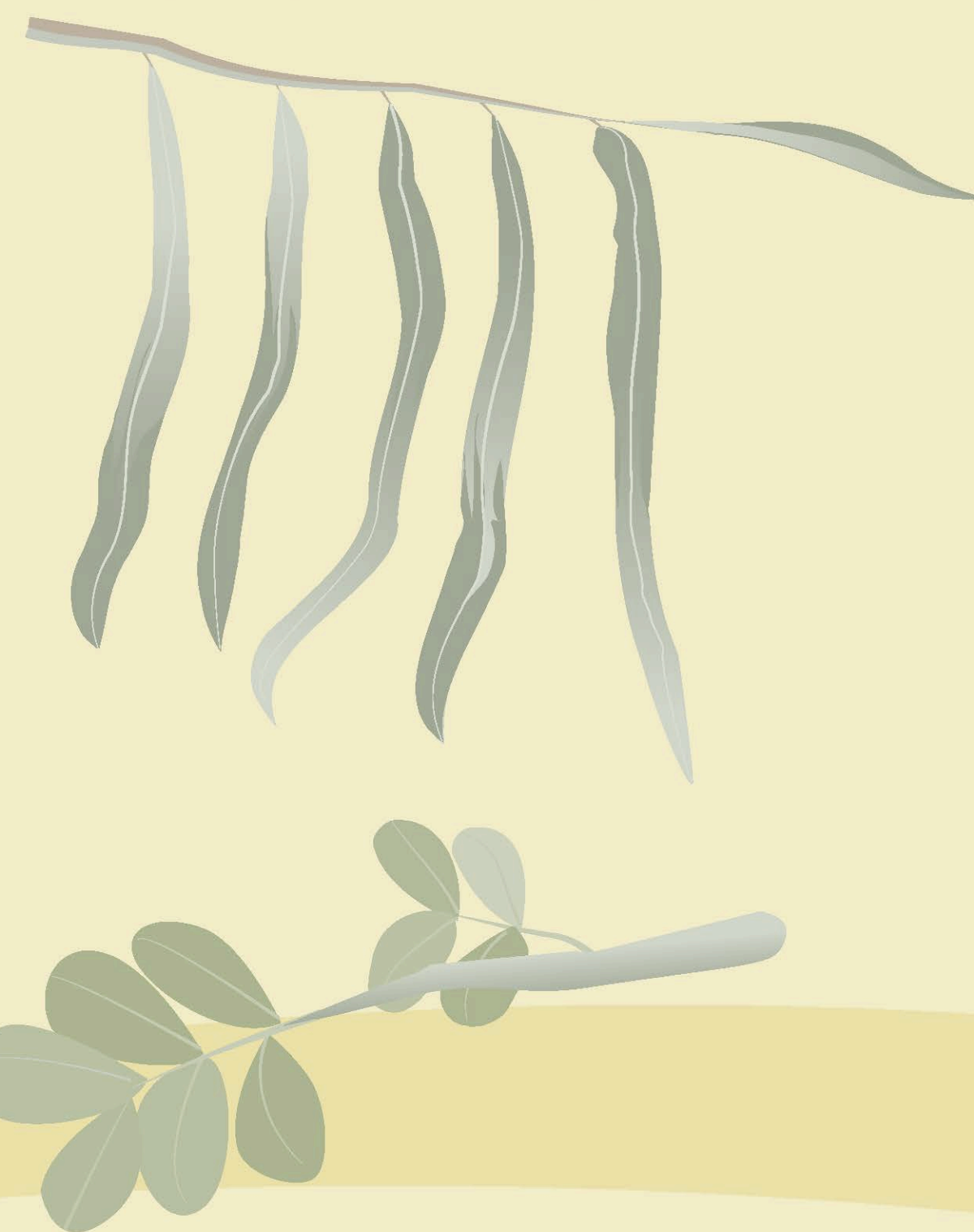
Need More Water

- Native to wet climates
- Cannot tolerate infrequent watering
- Large/wide leaves
- Dark green leaves



Need Less Water

- Native to arid climates
- Can tolerate infrequent watering
- Narrow leaves
- Small leaves
- Light green or grey leaves



Narrow, upright tree



Short, shrubby tree

Trees That Fit In

Trees that have room to grow, live longer.

**Pruning to contain tree size, shortens life.
For tight spaces look for:**

- Upright trees to fit narrow areas
- Short trees with shrub-like growth

Learn more about trees that survive and thrive at www.glendaleaz.com/trees

