

B | F | S | O

BERGIN, FRAKES, SMALLEY & OBERHOLTZER

August 6, 2025

**SUBJECT: Updated Letter with Meeting Time
PAD Rezone Request for approximately 8.5 acres - Case No. ZON25-07.**

Dear Neighbor or Interested Party:

This letter is to inform you of an application filed with the City of Glendale for the rezoning of approximately 8.5 acres of land at the northwest corner of Reems Road and Myrtle Avenue to Planned Area Development (PAD) to allow for industrial/commercial uses within the vicinity of the Luke AFB. The property is located within Yucca council district.

The property is currently vacant and zoned RU-43 within Maricopa County, and an annexation application (Case No. ZON25-07) has been submitted in conjunction with this rezone request. An annexation application (Case No. AN-271) has been submitted to the City of Glendale to accompany the rezone and bring the property into the jurisdiction of Glendale.

I have included a site plan with this letter for your review. A virtual neighborhood meeting will be held for the project per the details below:

Virtual Neighborhood Meeting:

Monday, August 18, 2025 at 6:00 p.m.

Zoom Meeting Link: <https://us02web.zoom.us/j/83809719975>

Zoom Meeting ID: 838 0971 9975

Dial in by phone: +1 (669) 444-9171

If you are unable to attend, you are welcome to reach out to me via phone or email at (602) 888-7855 or coberholtzer@bfsolaw.com. You may also contact Alex Lerma with the City of Glendale at (623) 930-2810. Comments must be received by September 2, 2025.

For additional details about this project or to be added to the Interested Parties mailing list, scan the QR code below:



Sincerely,

A handwritten signature in blue ink, appearing to read 'Carolyn', followed by a horizontal line.

Carolyn Oberholtzer

Encl:

- Conceptual Site Plan
- Aerial Map

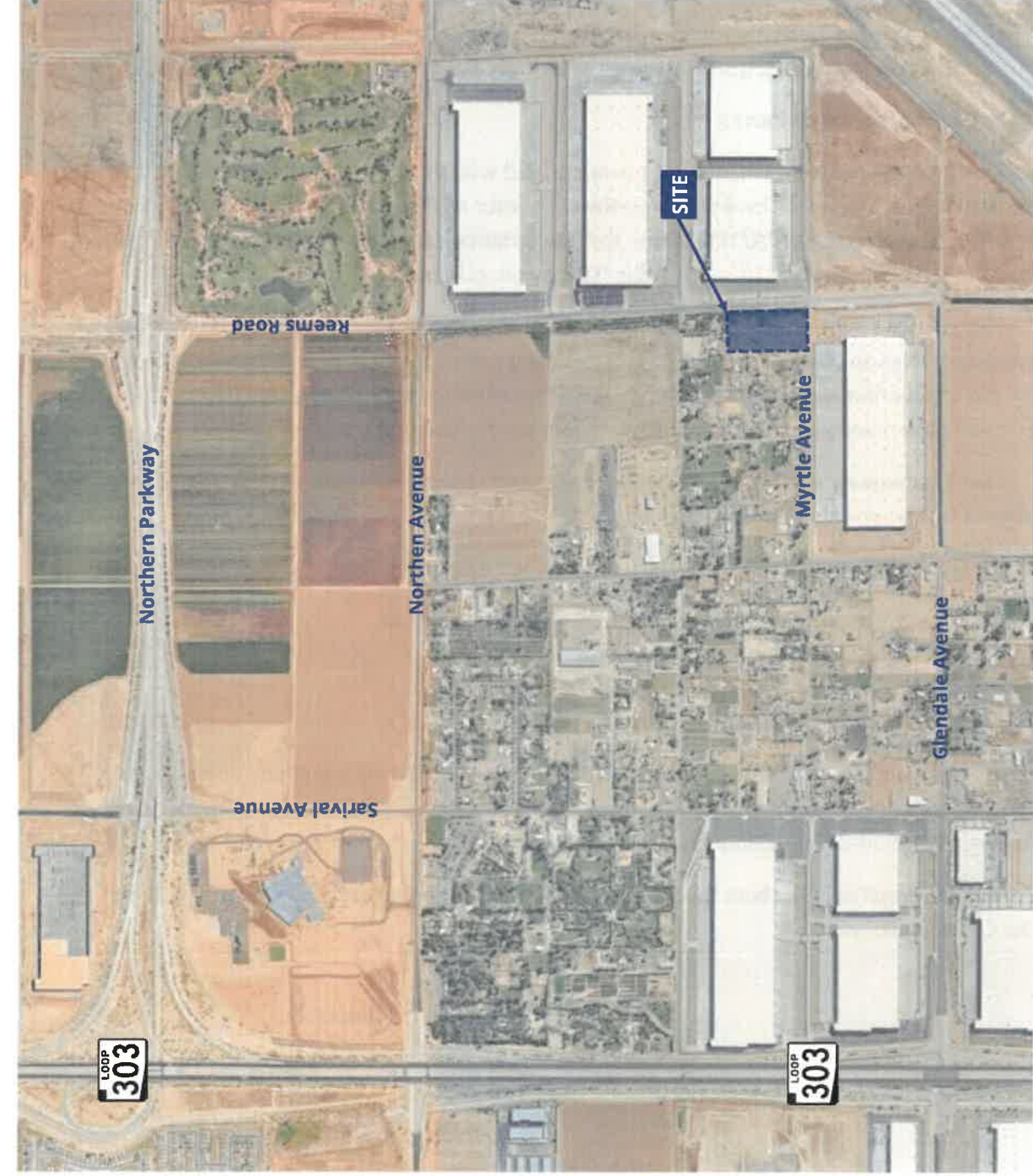


Figure 1

Vicinity Map

Reems and Myrtle Industrial

Project No. 2683.01

Maricopa County, Arizona

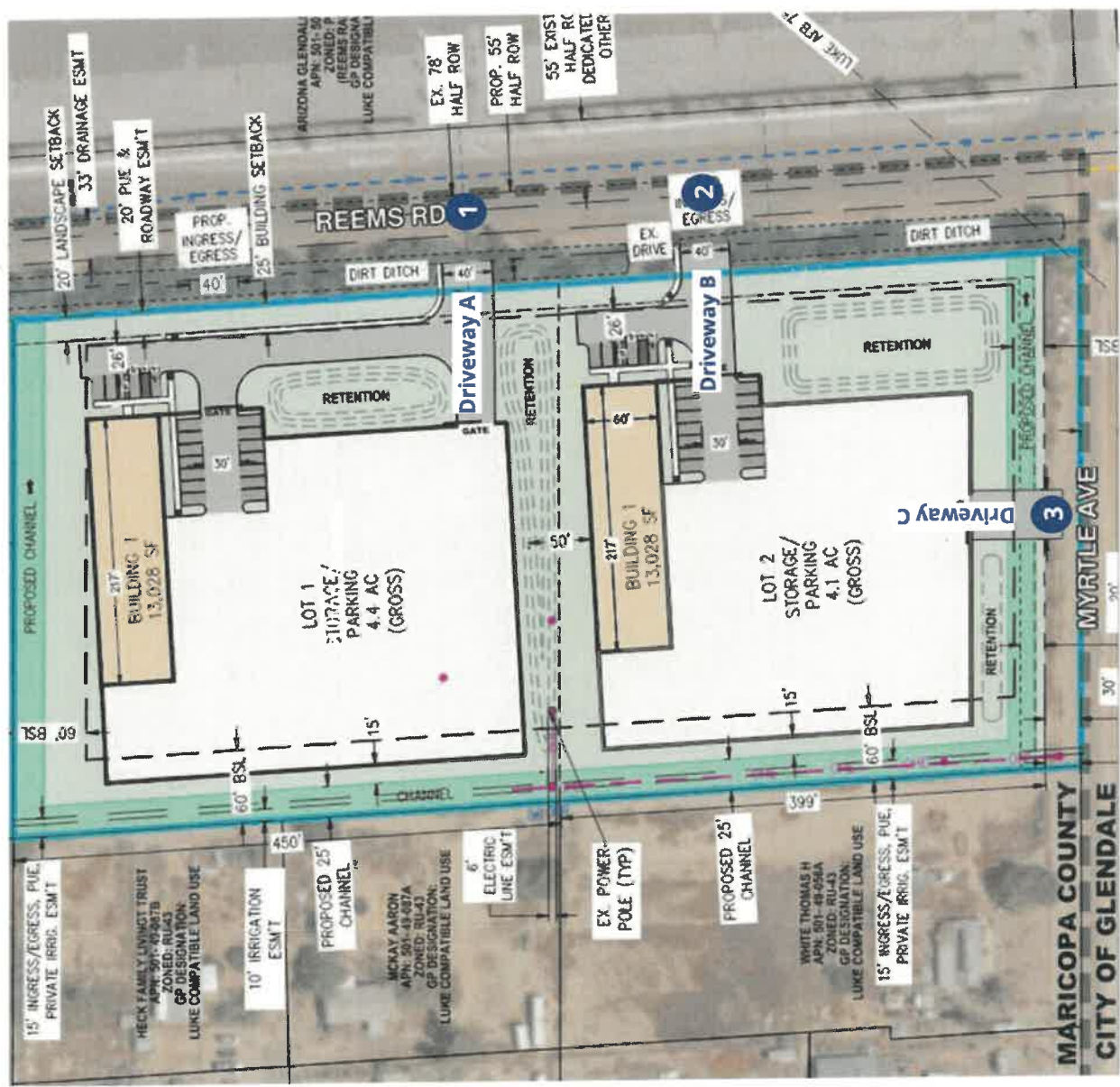


Figure 2

Conceptual Site Plan

Reems and Myrtle Industrial

Project No. 2683.01

Maricopa County, Arizona



